



26TH ANNUAL LONELY VALLEY

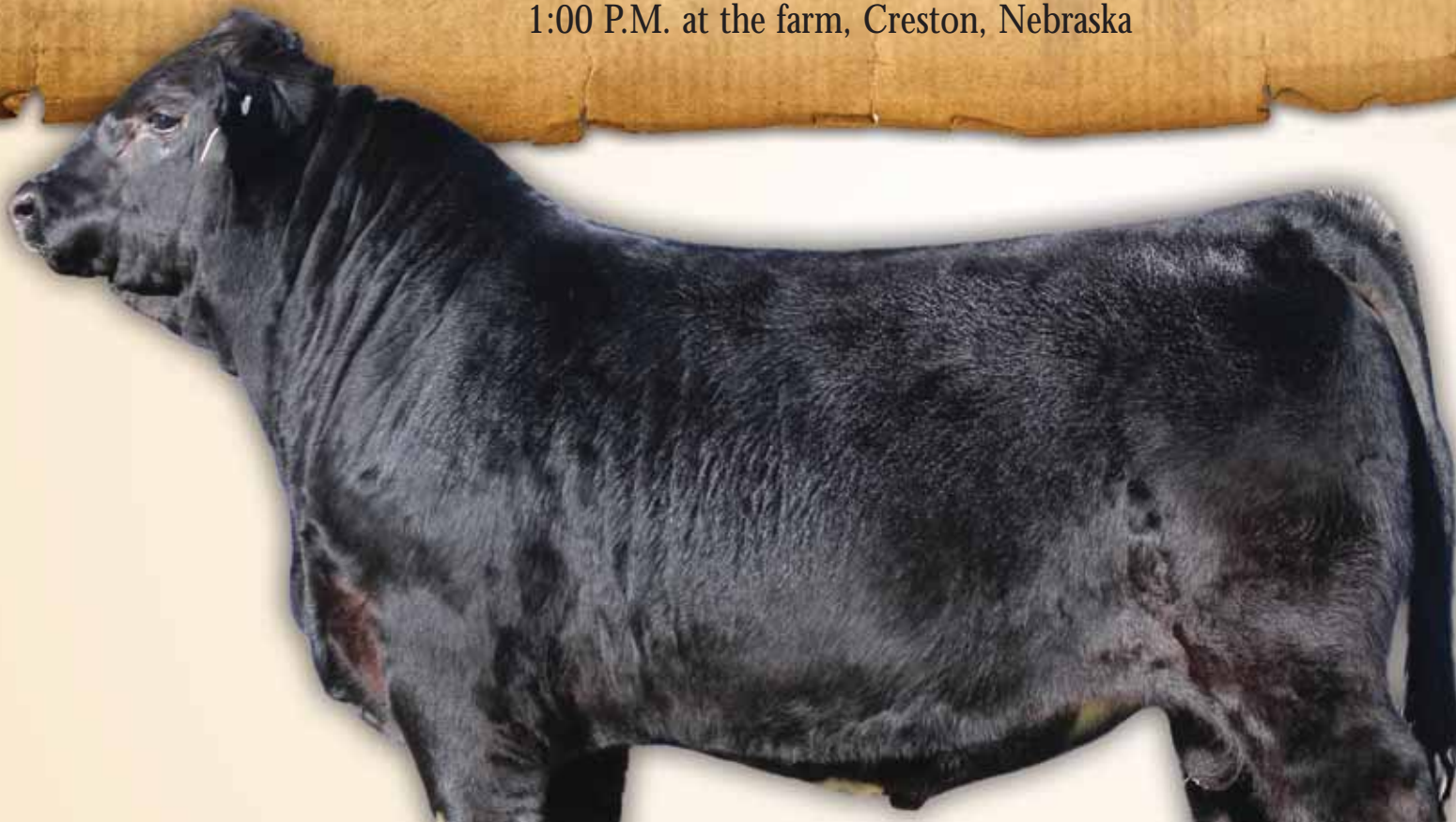
# KEEPIN' KIND

BULL SALE

Limousin • Lim-Flex • Angus

Saturday, February 25, 2017

1:00 P.M. at the farm, Creston, Nebraska



# GENERAL INFORMATION

CELEBRATING 34 YEARS IN THE  
PUREBRED SEEDSTOCK BUSINESS!!

## SALE DAY PHONES:

Chad Settje .....	402.910.5504	Dean Settje .....	402.649.2615
Mike Settje .....	402.920.0230	Mark Settje .....	402.920.0218
Randy Ratliff .....	615.330.2735	Kiley McKinna.....	402.350.3447
Mark Smith .....	515.229.5227		

## SALE REPRESENTATIVES:

Bruce Brooks, Auctioneer .....	580.695.2036
Randy Ratliff, Sale Manager .....	615.330.2735
Mark Smith, Sale Consultant .....	515.229.5227
Kiley McKenna, Sale Consultant .....	402.350-3447
Alan Sears, Western Livestock Journal .....	970.396.7521
Frank Padilla, NALF .....	308.350.3323
Andy Rest, Limousin Today .....	406.670.5678
Chris Buetler, Midwest Messenger.....	402.380.8244

## HOTEL ACCOMMODATIONS:

Holiday Inn Express .....

East Hwy 30, Columbus, NE

## DIRECTIONS TO LONELY VALLEY SEEDSTOCK:

*From Omaha:* Take Hwy 275 north and travel northwest to Hwy 91. Turn west on Hwy 91 and travel west to Leigh, NE, and look for the large propane tank on South side of road, continue to travel west on Hwy 91 four more miles to 160th Ave. Turn north on 160th Ave. and go three miles north to the ranch.

*From Columbus:* Go to Hwy 30 and 23rd Ave. (Kentucky Fried Chicken) and travel 18 miles north on blacktop road to Hwy 91. Then turn east on Hwy. 91 and go one mile to 160th Ave. Turn north on 160th Ave. and go three miles north to the ranch.

## MARKETING TEAM:



Randall O. Ratliff  
615.330.2735  
Randy@RRMktg.com www.RRMktg.com  
1212 Laurel St. #1614  
Nashville, TN 37203 (L#2845)



Mark Smith  
515.229.5227



Kiley McKinna  
402.350.3447 mcmarketingsales@aol.com  
www.MCMarketingManagement.com

## WATCH OR BID LIVE:

The 26th Annual  
Lonely Valley  
Keepin' Kind Bull Sale can be viewed and bids can be accepted  
through [www.dvauction.com](http://www.dvauction.com).



## AIRPORTS:

Columbus Municipal Airport, Norfolk Regional Airport & Omaha  
Eppley Airfield.

## DELIVERY:

Free delivery within a 250 mile radius and cost share arrangements  
will be made for traveling 250+ miles.

## ANNOUNCEMENTS:

Announcements made sale day will take precedence over printed material in the catalog. Please take note of any changes.

## SEMEN:

Lonely Valley Seedstock reserves the right to semen int. on any bull in the sale.

## TERMS:

Terms of the sale are cash unless prior credit arrangements are established between buyer and seller. Settlements are to be made with the clerk immediately after the conclusion of the auction.

## MAIL & PHONE BIDS:

Mailed or phone bids will be handled in a confidential matter. If you are unable to attend the sale, simply contact anyone in the sale day phone numbers. Please call in advance of the sale so we can help you ringside sale day. All cattle purchased through our 'sight unseen program' are unconditionally guaranteed, if the cattle purchased for you on order are not what you expected, we don't expect you to pay for them, no questions.

## BLOOD TYPE FOR PARENTAGE VERIFICATION:

All animals sold are guaranteed to be offspring of the recorded parents. Under the rules of NALF, all bulls born after January 1, 1991 that are to be used for artificial insemination or used naturally in a herd other than the owner of record must be parent verified by blood typing to both sire and dam. All females born after July 1, 1987 and December 31, 1990 that are to be used for artificial insemination or naturally in a herd other than the owner of record must be sire verified through blood typing. Sellers shall make the necessary parent blood samples available to purchasers upon written request by the purchaser's so long as a written request is received by sellers within 60 days after the sale of the applicable animal.

## LIABILITY:

Each animal will be the buyer's risk as soon as it is sold, but will be cared for by the seller for a reasonable period of time. Every precaution will be taken for the welfare of the cattle sold. Neither owner nor sales management can be responsible for accidents, but every effort will be made to provide for safety and comfort of those attending the sale.

## INSURANCE:

Insurance on your purchase can be provided by Mark Smith, Grass Roots Genetics & Consulting, Ankeny, IA, 515.229.5227

## PAYMENT:

Cattle must be paid for at the time of the sale unless prior arrangements are made with sale management at the time of the sale at 615.330.2735. 3% fee on all credit card payments.



# LONELY VALLEY SEEDSTOCK

Stan, Mike, Mark, Dean, Reed, Alex & Chad Settje  
Chad, 402.910.5504 • Dean, 402.649.2615  
Mike, 402.920.0230 • Mark, 402.920.0218  
270 5th Street., Creston, Nebraska 68631  
[www.lonelyvalley.com](http://www.lonelyvalley.com) • [csettje@agri-city.com](mailto:csettje@agri-city.com)



Welcome to our 26th Annual 'Keepin' Kind' Production Sale. After 34 years in the seedstock business, we have been blessed to have so many friends in this business. We are very grateful for the opportunity to bring another set outstanding stout bulls to you, our customer.

We know that there are other places to make your seed stock purchases and we appreciate your loyalty. Last year we sold 90% of our bulls to repeat customers. Taking care of you our customer is out #1 priority. As always, we offer an unconditional guarantee on all cattle sold. If you should have a bull go down during breeding season, we can usually have a replacement for you within a few days, available at our ranch or we will try to meet you half way, depending on the distance. We are very proud to say that we replace very few bulls each year.

Our herd consist of over 450 head of registered Limousin, Lim-Flex and Angus cattle. Our goal is to become a one-stop bull shop for all your genetic needs. Lonely Valley's Bull Battery continues to be ranked in the top 10% for all EPD traits.

Currently our bull battery ranks in the top of the breed for weaning

and yearling growth and milk and does so with a low to moderate birth weight. Our Marbling and Scrotal circumference EPD is unsurpassed, not just on one bull, but all LVLS herd sires combined. 30 plus years of selection pressure really do pay off. We continue to place extensive selection pressure on calm, easy doing cattle. This set of bulls have been easy to work with. You will notice the difference. As well, cows that fail to breed being sent down the road. Fertility in these bulls is excellent with an average scrotal measurement that is unequaled in the Limousin and Angus.

The bulls will be available to be viewed at the ranch near Creston a few days prior to the sale. As well, we will have 300 calves on the ground by sale day and several of the herd bulls for your viewing. We will be serving a complimentary Limousin Beef lunch at 11:00 a.m. Should you need assistance with travel plans, trucking and delivery or anything else, please call and we will be happy to assist you. See you Saturday, February 25th at the Ranch.

Sincerely,

Lonely Valley Seedstock

**Saturday, February 25, 2017**

1:00 P.M. at the farm, Creston, Nebraska

26TH ANNUAL LONELY VALLEY

**KEEPIN' KIND**

**BULL SALE**

Limousin • Lim-Flex • Angus



# ABOUT OUR CATTLE ...

## FEEDING:

The yearling cattle are fed to gain 3.25 per day, receiving a ration of corn gluten and alfalfa. We feed our bulls to gain sufficiently, without pushing a lot of corn in the ration. We believe that corn causes structure problems later in life and causes yearling bulls to 'melt' when turned out to pasture. We are very proud of the success rate our yearling bulls have had.

## SEMEN TESTING:

All bulls have been semen tested and measured and a certificate will go with each bull sold.

## UNCONDITIONAL GUARANTEE:

If the cattle that you purchase at our sale fail to meet your expectations, we will replace the animal, providing you return the animal to our ranch at your expense. We will provide you with a replacement animal or give you full credit toward next year's sale or a cash refund. This guarantee expires after the first breeding season. We ask that you provide travel expenses for the replacement animal. Customer Service is #1!

# ANALYZINE THE PERFORMANCE DATA ...

## BW :: BIRTH WEIGHT

We take birth weights on our cattle in order to give you some method of determining calving ease. Larger calves will sometimes come very easy. We believe that calf structure determines calving ease along with size.

## WW :: WEANING WEIGHT

This is the weight of the cattle taken at weaning time adjusted to a constant age of 205 days, and a good indication of early growth.

## YW :: YEARLING WEIGHT

This is the weight of the cattle taken at approximately one year of age and adjusted to a constant age of 365 days with at least 150 days between actual weaning and yearling weight dates.

## ADG :: AVERAGE DAILY GAIN

Growth rate is highly heritable and these numbers will give you an idea of how the cattle respond to environmental conditions. i.e. feed, weather, etc.

# HOW TO FIND WHAT YOU ARE LOOKING FOR IN THIS SALE ...

We first select without papers, finding all visible phenotypic defects and problems. Once the outliers are eliminated, we then select on paper, eliminating those cattle with performance, EPD or genetic problems. This two-step selection process is done at weaning and repeated again just before the sale with yearling data and semen checking added to the criteria. Of course, disposition is still the number one culling criteria in our herd. Choose the type of bull that best meets your cowherd or feel free to call us to further discuss your options. We would be happy to visit with you.

## 'MAXIMIZERS': Purebred & High Percentage Limousin Bulls

These lean, red meat machines will maximize hybrid vigor on your British and British X cows. These bulls will maximize performance without sacrificing calving ease. Several of these prospects go back into the purebred industry each year, being purchased by other purebred breeders.

## 'STABILIZERS': 75% Limousin x 25% Angus Bulls

Our most popular hybrid for 28 years, these ultra-thick and deep machines are unequalled in their muscle, volume and phenotype. These bulls work well on most any cowherd, offering the extreme thickness of Limousin and the volume of Angus. Hybrid vigor can be increased and maintained with these bulls on most all straight bred and crossbred cows.

## 'OPTIMIZERS': 50% Angus x 50% Limousin Bulls

These Angus x Limousin F1 Composites have been a hit on our sale for many years as well. Many cattlemen are using these bulls to moderate their cow size and create consistency or in a four way cross breeding system. Optimizers are moderately framed, very deep and offer much more thickness than the pure-bred Angus cattle.

## 'OPTIMIZERS': 25% Limousin x 75% Angus Bulls

They are 25% Limousin and 75% Angus. These bulls combine the best of the numbers of the elite Angus combined with the prominent Limousin. These bulls are huge numbered and have some of the strongest weights and stats of the entire sale offering. These bulls bring the statement of Lim-Flex to a whole new level in our breed. We urge you to see for yourself how any one of these bulls might fit into your program to sire a uniform and very desirable calf crop.

## 'ANGUS': Purebred Registered Angus Bulls

Over the past several years we have acquired over 100 Registered Angus females, along with flushing one of our top Angus cows in our Embryo Transfer Program, to promulgate a complimentary breed to our existing lines of seed-stock. Our goal is to provide Purebred Angus bulls that can offer an ideal complement to high percentage Limousin based cows. We have known for years that the Limousin x Angus cross is the best, now we will be offering both sides of the equation.

# MAGS Zodiac Sons



LOT 1: LVLS Devil's Advocate 1036D



MAGS Zodiac



LOT 2: LVLS Don Julio 2149D

## 1 LVLS Devil's Advocate 1036D

%Limousin (81) Bull HP / HB		NXM 2103112 01.01.2016		LVLS 1036D		EPD	%Rank
MAGS WINSTON	BT CROSSOVER 758N	CED	9	35			
MAGS ZODIAC	MAGS STRAWBERRY	BW	2.1	65			
MAGS XANTHOUS	DHVO DEUCE 132R	WW	79	10			
	BOHI RHONDA 314R	YW	127	3			
LVLS TOP CRITERIA 8862P	COLE WULF HUNT	MILK	20	95			
LVLS 7316U	LVLS8862M	CEM	7	35			
LVLS7316L	LVLS COWBOY 015F	SC	0.35	90			
	LVLS MISS STABILIZER 1386E	STAY	10	95			
		DOC	17	60			
		CW	45	4			
		REA	0.43	60			
		YG	-0.1	75			
		MARB	-0.04	45			
		SMTI	51.98	40			
		Actual BW	90 lbs.				
		Adj. WW	686 lbs.				
		Adj. YW	1,300 lbs.				
		ADG Post Weaning	3.84				
		Adj. SC	34.9				

- Homozygous polled and homozygous black
- Super disposition! Devil's advocate is an absolute angel to handle and be around, but that is just the beginning of his positive attributes.
- Study the angle of shoulder and hind leg in this special conignment, when you put him in motion, he is fluid in his stride and gets out and reaches off of both ends of his skeleton. That appropriate shoulder angle is complimented by how high his neck ties into the top side of his skeleton, giving him an ultra-attractive profile.
- In terms of pedigree and performance, he is sired by the growth icon MAGS Zodiac an out of a daughter of LVLS Top Criteria. His parentage YW data, lands him in the top 5% of the breed for YW EPD.

## 2 LVLS Don Julio 2149D

Lim-Flex (56) Bull HP / HB		LFM 2103660 01.25.16		LVLS 2149D		EPD	%Rank
MAGS WINSTON	BT CROSSOVER 758N	CED	10	25			
MAGS ZODIAC	MAGS STRAWBERRY	BW	1.8	60			
MAGS XANTHOUS	DHVO DEUCE 132R	WW	87	1			
	BOHI RHONDA 314R	YW	143	1			
MAGS UNWASHED	WLR DIRECT HIT	MILK	22	80			
LVLS AQUA 2148A	H&H POLLED STARGAZER	CEM	8	20			
LVLS 2048W	LAGRAND VRD 7185	SC	0.66	65			
	LVLS ND 1407 2048T	STAY	10	95			
		DOC	14	75			
		CW	55	1			
		REA	0.41	60			
		YG	-0.04	85			
		MARB	0.25	20			
		SMTI	63.74	10			
		Actual BW	81 lbs.				
		Adj. WW	673 lbs.				
		Adj. YW	1,269 lbs.				
		ADG Post Weaning	3.73				
		Adj. SC	37.5				

- 2017 NWSS Lim-Flex Reserve Division Pen
- Homozygous polled and homozygous black
- Quite possibly one of the most eye appealing bulls that we have ever raised, we can't wait until we get him on display in the yards, he is sure to have a lot of fans! Can't draw an outline of a young herd sire any more ideal than this!
- LVLS Don Julio 2149D is a direct son of MAGS Zodiac, one of the most popular AI sires in 2015 and 2016 due to the impeccable phenotype he is passing on.
- This 56% Lim-Flex sire has all the makings to be a serious contributor in a cowherd. Just imagine the income potential with a herd sire that ranks in the top 1% for WW, YW and as well as the top 20% for MB. Sell you calves off the cow or on the rail, either way, you will come out ahead!



LOT 3: LVL5 Duff Man 6736D

### 3 LVL5 Duff Man 6736D

Lim-Flex (67) Bull HP / Black LFM 2103102 01.02.16 LVL5 6736D

			EPD	%Rank
MAGS WINSTON	BT CROSSOVER 758N	CED	8	45
<b>MAGS ZODIAC</b>	MAGS STRAWBERRY	BW	2.8	80
MAGS XANTHOUS	DHVO DEUCE 132R	WW	86	1
	BOHI RHONDA 314R	YW	142	1
AUTO BLACK DAKOTA 129J	EXLR DAKOTA 353G	MILK	24	65
<b>LVL5 BETSY 6736B</b>	DFLC JET SET BPC 34Y	CEM	9	10
LVL5 6736X	MYTTY IN FOCUS	SC	0.78	55
	LVL56736K	STAY	12	85
		DOC	18	55
		CW	51	2
		REA	0.12	95
		YG	0.01	95
		MARB	0.1	30
		SMTI	58.33	20

- Homozygous Polled and phenotypically black
- LVL5 Betsy 6736B punched a golden ticket in August when she weaned LVL5 Duff Man 6736D as a two-year-old! The AUTO Black Dakota daughter gave it all she had and weaned her first calf at 738lbs!
- LVL5 Duff Man 6736D was an easy pick for our Denver pen, he is so flashy and eye appealing, his substance doesn't interfere with his quality or soundness.
- Complete package here! He is functionally designed, a non-parent trait leader WW and has an highly marketable pedigree, being a direct son of MAGS Zodiac.

Actual BW	90 lbs.
Adj. WW	738 lbs.
Adj. YW	1,400 lbs.
ADG Post Weaning	4.14
Adj. SC	35.5

### 4 LVL5 Maximizer 1028D

%Limousin (81) Bull DP / HB NXM 2103098 01.17.2016 LVL5 1028D

			EPD	%Rank
MAGS WINSTON	BT CROSSOVER 758N	CED	9	35
<b>MAGS ZODIAC</b>	MAGS STRAWBERRY	BW	2.9	80
MAGS XANTHOUS	DHVO DEUCE 132R	WW	89	1
	BOHI RHONDA 314R	YW	148	1
AHCC WESTWIND W544	KAJO RESPONDER 120R	MILK	22	80
<b>LVL5 BLAYNE 5741B</b>	AHCC MISS WULF HUNT R544	CEM	7	35
LVL5 5741U	LVL5 TOP CRITERIA 8862P	SC	0.38	90
	LVL55741J	STAY	9	>95
		DOC	14	75
		CW	56	1
		REA	0.27	85
		YG	0.01	95
		MARB	-0.04	45
		SMTI	54.14	35

- Homozygous black and double polled
- This calf has a WW epd that is high than a lot of bull YW epds! My goodness, I thought they were going to be good, didn't realize that he would come back as a non-parent trait leader for WW, YW and CW! And to top it off, he is in the top 10% for TM as well!
- These MAGS Zodiac calves are doing exactly what they were designed to do, they are adding lbs in an attractive package.
- A 730# adj WW, mathematically works out to a 110 ratio and a WDA of 3.31lbs.
- Oh, and did we mention that he did this on a first calf dam? It is safe to say that she has punched her ticket to the keep pen.

Actual BW	88 lbs.
Adj. WW	730 lbs.
Adj. YW	1,392 lbs.
ADG Post Weaning	4.14
Adj. SC	37.3

### 5 LVL5 Stabilizer 9585D

Lim-Flex (66) Bull HP / HB LFM 2105760 01.01.2016 LVL5 9585D

			EPD	%Rank
MAGS WINSTON	BT CROSSOVER 758N	CED	10	25
<b>MAGS ZODIAC</b>	MAGS STRAWBERRY	BW	0.9	40
MAGS XANTHOUS	DHVO DEUCE 132R	WW	85	2
	BOHI RHONDA 314R	YW	131	1
LVL5 X-TERNAL 3506X	JCL LODESTAR 27L	MILK	23	75
<b>LVL5 BETSY 9585B</b>	LVL5 2506S	CEM	10	4
LVL5 MISS TRAVLER 9586U	S A V 8180 TRAVELER 004	SC	0.69	65
	LVL59586N	STAY	10	95
		DOC	16	65
		CW	52	2
		REA	0.15	95
		YG	0.09	95
		MARB	0.12	30
		SMTI	58.16	25

- Homozygous polled and homozygous black
- Quite possibly the highest YW EPD bull in the breed with a calculation of 131, which places him as a trait leader for non-sires. Needless to say, growth isn't a concern with these MAGS Zodiac sons! We are so pleased for our friends at Buck Ridge and Magness for the way the outstanding sire, Zodiac has turned into. We certainly have had good luck with him.
- This 66% Lim-Flex bull is doubled up maternal on the bottom side of his pedigree with Traveler 8180 and JCL Lodestar.

Actual BW	76 lbs.
Adj. WW	674 lbs.
Adj. YW	1,303 lbs.
ADG Post Weaning	3.93
Adj. SC	36.5

# LVLS Bank Account 8116B Sons



LOT 6: LVLS Drago 1015D



LVLS Bank Account 8116B



LOT 7: LVLS Maximizer 1037D

## 6 LVLS Drago 1015D

Lim-Flex (50) Bull LFM 2103027  
DP / HB 01.02.2016 LVLS 1015D

MAGS WAZOWSKI	DHVO DEUCE 132R
<b>LVLS BANK ACCOUNT 8116B</b>	BOHI RED ROBIN 282R
LVLS WILMA 8116W	LVLS TOP CRITERIA 8862P
	LVLS 8115T
MYTTY IN FOCUS	S A F FOCUS OF E R
<b>LVLS 2240U</b>	MYTTY COUNTESS 906
LVLS 2240S	LVLS 842L
	L V MISS BANDITO 2240

- Homozygous black and double polled
- This 50% Lim-Flex herd sire prospect is strong in so many given traits.
- He posts a solid set of numbers with a 1.4 for birth, 120 for yearling weight, 22 for milk and .34 for marbling.
- His dam is a daughter of Mytty In Focus that has been a solid producer over the years.

	EPD	%Rank
CED	10	25
BW	1.4	50
WW	79	10
YW	120	5
MILK	22	80
CEM	7	35
SC	1.5	3
STAY	14	70
DOC	18	55
CW	43	10
REA	0.36	70
YG	-0.03	90
MARB	0.34	15
SMTI	65.29	10
Actual BW	88 lbs.	
Adj. WW	647 lbs.	
Adj. YW	1,204 lbs.	
ADG Post Weaning	3.84	
Adj. SC	34.0	

## 7 LVLS Maximizer 1037D

Lim-Flex (73) Bull LFM 2103111  
DP / HB 01.08.2016 LVLS 1037D

MAGS WAZOWSKI	DHVO DEUCE 132R
<b>LVLS BANK ACCOUNT 8116B</b>	BOHI RED ROBIN 282R
LVLS WILMA 8116W	LVLS TOP CRITERIA 8862P
	LVLS 8115T
MAGS THE GENERAL	AUTO DOLLAR GENERAL 122R
<b>LVLS ANASTASIA 7316A</b>	EXLR LUVLY 821M
LVLS 7316W	LAGRAND ARCHITECT 7118
	LVLS7316L

- Homozygous black and double polled
- Here is another one of those LVLS Bank Account sons who has rung the bell in terms of structural correctness and performance. He is one that stands out when you walk through the pasture and reads as the "cowman's kind."
- Super stout made and really pushed down the scales at weaning time, recorded a 678 aAdj. WW on a three-year-old MAGS The General Daughter.
- 83 WW EPD and 124 YW EPD, growth won't be a problem with this pedigree!

	EPD	%Rank
CED	7	55
BW	3.8	95
WW	83	3
YW	126	3
MILK	25	55
CEM	4	80
SC	0.85	45
STAY	-	-
DOC	-	-
CW	47	3
REA	0.54	40
YG	-0.1	75
MARB	0.03	40
SMTI	55.78	30
Actual BW	96 lbs.	
Adj. WW	678 lbs.	
Adj. YW	1,254 lbs	
ADG Post Weaning	3.60	
Adj. SC	37.7	



## 8 LVLS Stabilizer 9077D

Lim-Flex (75) Bull  
HP / HB

LFM 2104823  
01.10.2016

LVLS 9077D

MAGS WAZOWSKI	DHVO DEUCE 132R	CED	5	80
<b>LVLS BANK ACCOUNT 8116B</b>	BOHI RED ROBIN 282R	BW	3.2	85
LVLS WILMA 8116W	LVLS TOP CRITERIA 8862P	WW	83	3
	LVLS 8115T	YW	121	5
MAGS UNWASHED	WLR DIRECT HIT	MILK	6	45
<b>LVLS YES MOM 9075Y</b>	H&H POLLED STARGAZER	CEM	4	80
LVLS UNKNOWN 9075U	LVLS SECRET WEAPON 4408K	SC	0.95	35
		STAY	10	95
		DOC	14	75
		CW	46	4
		REA	0.58	30
		YG	-0.16	60
		MARB	-0.01	45
		SMTI	54.87	30

- Homozygous polled and homozygous black
- LVLS Stabilizer 9077D is another one of those LVLS Bank Account sons who we hate to see go! If these bulls weren't so closely related to a lot of our cows, they wouldn't be gracing the pages of this catalog!
- MAGS Unwashed certainly has produced some exceptional females for us over the years, 9077D's dam, LVLS Yes Mom 9075Y is one of the many.
- Milk and grow certainly isn't a concern with 9077D, he is in the top 5% for TM, WW and YW EPD.

Actual BW	--
Adj. WW	656 lbs.
Adj. YW	1,178 lbs.
ADG Post Weaning	3.26
Adj. SC	38.3

## 9 LVLS Stabilizer 1030D

Lim-Flex (48) Bull  
DP / DB

LFM 2110601  
01.21.16

LVLS 1030D

MAGS WAZOWSKI	DHVO DEUCE 132R	CED	11	20
<b>LVLS BANK ACCOUNT 8116B</b>	BOHI RED ROBIN 282R	BW	0.8	35
LVLS WILMA 8116W	LVLS TOP CRITERIA 8862P	WW	81	4
	LVLS 8115T	YW	127	3
MYTTY IN FOCUS	S A F FOCUS OF E R	MILK	25	55
<b>LVLS MISS FOCUS 6792Y</b>	MYTTY COUNTESS 906	CEM	6	50
LVLS 6792U	BON VIEW NEW DESIGN 878	SC	1.35	10
	LVLS 6792S	STAY	15	60
		DOC	20	50
		CW	46	4
		REA	0.39	65
		YG	-0.01	90
		MARB	0.37	10
		SMTI	67.54	10

- Double polled and double black
- There is no doubt in our mind, as time goes on that LVLS Bank Account and his progeny will be highly used because of their income generation and environmental adaptability. We hate to sound redundant, but we know what these cattle can do and we are confident they will meet our customer's needs.
- 208 and MYTTY In Focus were both Angus bulls that we tied to pretty heavily, with exceptional return. 1030D's Lim-Flex dam, LVLS Miss Focus 9792Y ties together both of those lines.
- In terms of data, 1030D is desirable across the spectrum with highlights consisting of an 81 WW and 126 YW, while still having double digit calving ease.

Actual BW	87 lbs.
Adj. WW	668 lbs.
Adj. YW	1,258 lbs.
ADG Post Weaning	3.69
Adj. SC	35.9

## 10 LVLS Doubledown 9069D

%Limousin (62) Bull  
HP / HB

NXM 2104818  
01.06.2016

LVLS 9069D

MAGS WAZOWSKI	DHVO DEUCE 132R	CED	6	65
<b>LVLS BANK ACCOUNT 8116B</b>	BOHI RED ROBIN 282R	BW	2.5	75
LVLS WILMA 8116W	LVLS TOP CRITERIA 8862P	WW	82	3
	LVLS 8115T	YW	115	10
LVLS X-TRA PROFIT 2014	AUTO DOLLAR GENERAL 122R	MILK	5	55
<b>LVLS ZADZY 9069</b>	JCL MAYBERRY 62S	CEM	4	80
		SC	0.90	35
		STAY	-	-
		DOC	-	-
		CW	41	10
		REA	0.56	35
		YG	-0.20	50
		MARB	-0.09	55
		SMTI	51.64	40

- Homozygous polled and homozygous black
- Here is another LVLS Bank Account calf, who has rung the bell in terms of bringing so many good traits together in one package.
- This January bull is ready to go to work for you and have a tremendous growth influence in your cowherd, 9069D ranks in the top 3% and top 10% of the breed for WW and YW epd.
- 9069D has a neat combination punch of data, ranking in the top 10% for YW, TM and CW. His progeny have profit potential written all over them!

Actual BW	91 lbs.
Adj. WW	650 lbs.
Adj. YW	1,145 lbs.
ADG Post Weaning	3.08
Adj. SC	36.2

## 11 LVLS Optimizer 9001D

Lim-Flex (50) Bull  
HP / DB

LFM 2104813  
01.18.2016

LVLS 2104813

MAGS WAZOWSKI	DHVO DEUCE 132R	CED	11	20
<b>LVLS BANK ACCOUNT 8116B</b>	BOHI RED ROBIN 282R	BW	0.3	25
LVLS WILMA 8116W	LVLS TOP CRITERIA 8862P	WW	84	2
	LVLS 8115T	YW	129	2
MYTTY IN FOCUS	S A F FOCUS OF E R	MILK	26	45
<b>LVLS AVERY 9001A</b>	MYTTY COUNTESS 906	CEM	6	50
LVLS MISS BLACKBIRD 111U	LVLS TOP CRITERIA 8862P	SC	1.27	15
	FRENZEN BLACKBIRD M120	STAY	13	80
		DOC	19	55
		CW	42	10
		REA	0.46	50
		YG	-0.04	85
		MARB	0.32	15
		SMTI	65.88	10

- Homozygous polled and homozygous black
- Super proud of this one, he is sired by one our all-time favorite LVLS prefixed bulls now owned by Liberty Ranches, LVLS Bank Account 8116B and out of a beautiful young female that goes back to our foundation Angus cow, Frenzen Blackbird M120.
- 9001D truly represent a lot of the good that has ever been produced in our program including LVLS Farmer John and LVLS Top Criteria.
- Evaluate the data on 9001D and you will find a lot of highlights and very few holes. Exceptional across the board!

Actual BW	81 lbs.
Adj. WW	681 lbs.
Adj. YW	1,287 lbs.
ADG Post Weaning	3.79
Adj. SC	36.1

## 12 LVLS Doc Holiday 7009D

% Limousin (50) Bull  
Polled / HB

NXM 2103692  
01.13.2016

NXM 2103692

MAGS WAZOWSKI	DHVO DEUCE 132R	CED	9	35
<b>LVLS BANK ACCOUNT 8116B</b>	BOHI RED ROBIN 282R	BW	1.7	55
LVLS WILMA 8116W	LVLS TOP CRITERIA 8862P	WW	80	5
	LVLS 8115T	YW	121	5
POSS NEW DESIGN 410	BON VIEW NEW DESIGN 1407	MILK	26	45
<b>LVLS 7009S</b>	POSS MAVERICK 252	CEM	7	35
LVLS7009L	LVLS FARMER 4G	SC	0.95	35
		STAY	13	80
		DOC	11	85
		CW	40	10
		REA	0.47	50
		YG	-0.12	70
		MARB	0.17	25
		SMTI	59.88	20

- Heterozygous Polled and homozygous black
- LVLS Bank Account was the top selling bull out of our 2015 sale who went to Liberty Ranches, however we felt strongly about incorporating him into our genetic pool and consequently bred a large group to him A.I. We are so glad that we did. This first calf crop out of him is anything short of exceptional.
- Adj. WW of 678 with a WDA of 3.3, LVLS Doc Holiday performed exactly as planned to this point, yet his best days are ahead of him. This is one of those bulls who just gets better and better with each passing day.
- He traces back to the calving ease and marbling sire, Bon View New Design 1407.

Actual BW	87 lbs.
Adj. WW	678 lbs.
Adj. YW	1,247 lbs.
ADG Post Weaning	3.56
Adj. SC	33.5



# PBRs Equinox 161Y Sons



LOT 13: LVLS Dispatch 718D



PBRs Equinox 161Y



LOT 14: LVLS Denali 8213D

## 13 LVLS Dispatch 718D

Lim-Flex (60) Bull LFM 2103698  
HP / Red 01.27.2016 LVLS 718D

LH U HAUL 135U	BASIN FRANCHISE P142
<b>PBRs EQUINOX 161Y</b>	EXLR DUCHESS 7129R
MAGS NATASHA	AUTO BLACK DAKOTA 129J
	MAGS JULIET
MYTTY IN FOCUS	S A F FOCUS OF E R
<b>LVLS YOU FOCUSED 718Y</b>	MYTTY COUNTESS 906
MCBN RACHEL	EXLR NEW GENERATION 071M
	LVLS GABBY 3302G

- Heterozygous Polled and Red
- Sugarbush Limousin, Double A Land & Cattle and ourselves incorporated PBRs Equinox into our breeding line-up in 2012 from P Bar S Ranch in Oklahoma. Since then we have been very pleased with his progeny and how true they breed.
- 718D is deep middle, big topped and has plenty of flex and longevity in his structural construction.
- Our market for good red bulls is strong, especially calving ease individuals with strong MB and SMTI numbers, we absolutely feel that he fits this bill.

	EPD	%Rank
CED	10	25
BW	-0.2	20
WW	67	35
YW	99	35
MILK	25	55
CEM	8	20
SC	0.95	35
STAY	12	85
DOC	19	55
CW	23	65
REA	0.24	90
YG	-0.12	70
MARB	0.36	10
SMTI	61.33	15
Actual BW	78 lbs.	
Adj. WW	663 lbs.	
Adj. YW	1,269 lbs.	
ADG Post Weaning	3.79	
Adj. SC	37.1	

## 14 LVLS Denali 8213D

Lim-Flex (48) Bull LFM 2104807  
HP / Black 01.10.2016 LVLS 8213D

LH U HAUL 135U	BASIN FRANCHISE P142
<b>PBRs EQUINOX 161Y</b>	EXLR DUCHESS 7129R
MAGS NATASHA	AUTO BLACK DAKOTA 129J
	MAGS JULIET
MAGS UNHOOKS	BASIN FRANCHISE P142
<b>LVLS Y YES 8212Y</b>	MAGS MARQUEE
LVLS 8212R	CONNELLY LEAD ON
	SILVER OAK VINTAGE 807

- 2017 NWSS Lim-Flex Reserve Division Pen
- Homozygous polled and black
- For us, Denali sorts himself to the top in terms of skeletal design and attractiveness, no matter what angle you evaluate Denali from he reads with a superior level of quality and balance.
- Bulls with this phenotypic quality and carcass strengths are hard to come by; we are honored and humbled to be able to offer this intriguing package for public appraisal.
- LVLS Denali 8213D is the 48% Lim-Flex bull to put you in the driver's seat with style!
- In terms of pedigree, his dam is three for three in terms of producing herd sires. She has placed a natural bull in each of our past three sales!

	EPD	%Rank
CED	7	55
BW	2	2
WW	80	5
YW	120	5
MILK	25	55
CEM	7	35
SC	1.05	25
STAY	8	>95
DOC	13	80
CW	38	15
REA	0.47	50
YG	-0.1	75
MARB	0.38	10
SMTI	68.54	5
Actual BW	89 lbs.	
Adj. WW	711 lbs.	
Adj. YW	1,289 lbs.	
ADG Post Weaning	3.61	
Adj. SC	37.4	



# 15 LVLS Optimizer 3002D

Lim-Flex (41) Bull LFM Pending  
 DP / Black 01.10.2016 LVLS 3002D

			EPD	%Rank
PBRs EQUINOX 161Y	LH U HAUL 135U	BASIN FRANCHISE P142	CED	7 -
	MAGS NATASHA	EXLR DUCHESS 7129R	BW	1.2 -
		AUTO BLACK DAKOTA 129J	WW	67 -
LVLS 3002Y	LAGRAND 219	MAGS JULIET	YW	103 -
	LVLS 3002U		MILK	23 -
			CEM	- -
		SC	0.8 -	
		STAY	- -	
		DOC	15 -	
		CW	29 -	
		REA	0.41 -	
		YG	- -	
		MARB	0.25 -	
		SMTI	59 -	
		Actual BW	85 lbs.	
		Adj. WW	722 lbs.	
		Adj. YW	1,346 lbs.	
		ADG Post Weaning	3.67	
		Adj. SC	33.0	

- Black an double polled  
 - The one bull at LVLS that has done an amazing job siring a calf crop that has been very marketable is PBRs Equinox. He is now deceased but is a son of LH U Haul that is huge numbered and very well made. His calves have that prominent look and are back with a strong set of numbers

# 16 LVLS Optimizer 2150D

Lim-Flex (48) Bull LFM Pending  
 DP / Black 01.02.2016 LVLS 2150D

			EPD	%Rank
PBRs EQUINOX 161Y	LH U HAUL 135U	BASIN FRANCHISE P142	CED	7 -
	MAGS NATASHA	EXLR DUCHESS 7129R	BW	-0.1 -
		AUTO BLACK DAKOTA 129J	WW	65 -
LVLS 2148X		MAGS JULIET	YW	98 -
			MILK	25 -
			CEM	- -
		SC	0.8 -	
		STAY	- -	
		DOC	15 -	
		CW	29 -	
		REA	0.41 -	
		YG	- -	
		MARB	0.25 -	
		SMTI	59 -	
		Actual BW	75 lbs.	
		Adj. WW	665 lbs.	
		Adj. YW	1,216 lbs.	
		ADG Post Weaning	3.25	
		Adj. SC	37.7	

- Black and double polled  
 - This son of PBRs Equinox is one stout made and powerful herd sire prospect  
 - He offers a low birth weight of 75 pounds and yearling weight of 1,216 pounds  
 - This herd sire prospect posts a -0.1 for birth, 25 for milk and .25 for marbling

# 17 LVLS Don Julio 763D

Lim-Flex (73) Bull LFM 2103700  
 DP / Black 02.28.2016 LVLS 763D

			EPD	%Rank
PBRs EQUINOX 161Y	LH U HAUL 135U	BASIN FRANCHISE P142	CED	7 55
	MAGS NATASHA	EXLR DUCHESS 7129R	BW	1.5 50
		AUTO BLACK DAKOTA 129J	WW	83 3
HAHK WHITNEY 763W	MAGS TWAIN	MAGS JULIET	YW	118 10
	ANITA JO DHVO 717R	AUTO DOLLAR GENERAL 122R	MILK	30 15
		THOMAS PATRICIA 1911	CEM	4 80
		EF MAIN STAY 541M	SC	0.7 55
		VOET ANNA JO	STAY	10 95
			DOC	18 55
			CW	32 30
			REA	0.32 75
			YG	-0.06 85
			MARB	0.08 35
			SMTI	56.07 30
		Actual BW	86 lbs.	
		Adj. WW	791 lbs.	
		Adj. YW	1,364 lbs.	
		ADG Post Weaning	3.58	
		Adj. SC	38.6	

- Double Polled and Black  
 - Dam of LVLS Don Julio 763D is one of our top producing females; HAHK Whitney 763W has weaned 4 progeny with an average WW ratio of 107 with an avg. adj. WW of 707. There is no guesswork in what type of female this herd sire prospect stems from.  
 - 763D ranks posts an impressive 83 WW epd and 72 TM epd, both land him in the top 3% of the breed. This combined with the actual data his dam has recorded, are further proof that he will be a maternal asset to any program.

# DVAuction

Broadcasting Real-Time Auctions

❖ WATCH OR BID LIVE

The 26th Annual Lonely Valley Keepin' Kind Bull Sale can be viewed and bids can be accepted through [www.dvauction.com](http://www.dvauction.com).

# MAGS Zamindar Sons



MAGS Zamindar

## 18 LVLS Stabilizer 5793D

Lim-Flex (71) Bull LFM 2103101  
DP / HB 01.03.2016 LVLS 5793D

BOHI TOP DOLLAR 7144T	AUTO DOLLAR GENERAL 122R
<b>MAGS ZAMINDAR</b>	CARROUSELS PINA COLADA
MAGS TAVISH	DHVO DEUCE 132R
	MAGS PUDDLES
BON VIEW NEW DESIGN 878	B/R NEW DESIGN 036
<b>LVLS 5792W</b>	BON VIEW GAMMER 85
LVLS5791T	LVLS CONCEALED WEAPON6794
	LVLS 5791J

- Homozygous black and double polled
- LVLS Stabilizer 5793D came off the cow with an adjusted WW of 673 pounds and hasn't looked back! We are so excited about the future of the homozygous black son of MAGS Zamindar!
- This 71% Lim-Flex herd sire in the making, is as sounds as a cat on the move and reads with a lot of shape and natural dimension.
- The 878 influence in his pedigree is strong and his MK number will strong and should pass on some exceptional udder quality.
- Top 10% for CEM and top 25% for MB.

	EPD	%Rank
CED	9	35
BW	1.4	50
WW	67	35
YW	92	55
MILK	28	30
CEM	9	10
SC	0.9	35
STAY	18	25
DOC	12	85
CW	28	45
REA	0.05	>95
YG	-0.01	90
MARB	0.2	25
SMTI	56.14	30
Actual BW	92 lbs.	
Adj. WW	673 lbs.	
Adj. YW	1,101 lbs	
ADG Post Weaning	2.68	
Adj. SC	39.0	

## 19 LVLS Diamond Cutter 1007D

Lim-Flex (62) Bull LFM 2103119  
HP / HB 01.01.2016 LVLS 1007D

BOHI TOP DOLLAR 7144T	AUTO DOLLAR GENERAL 122R
<b>MAGS ZAMINDAR</b>	CARROUSELS PINA COLADA
MAGS TAVISH	DHVO DEUCE 132R
	MAGS PUDDLES
BASIN MAX 602C	G T MAXIMUM
<b>LVLS 795S</b>	BASIN ELINE ERICA 315U
LVLS 795B	YKCC IRONSIDE BULL 155NS

- 2017 NWSS Lim-Flex Reserve Division Pen
- Homozygous Black and homozygous polled
- LVLS Diamond Cutter 1007D sorted himself into the Denver pen due to his exceptional eye appeal and phenomenal disposition.
- In terms of skeletal format and structural integrity, Diamond Cutter has it all! His bone work and joint flexibility are exceptional, consequently he has longevity written all over him.
- 1007D is a direct son of MAGS Zamindar, the highly promoted and very popular herd sire at P Bar S Ranch in Oklahoma.

	EPD	%Rank
CED	8	45
BW	2.4	70
WW	66	40
YW	100	35
MILK	26	45
CEM	8	20
SC	0.85	45
STAY	18	25
DOC	12	85
CW	31	35
REA	0.06	>95
YG	0.02	95
MARB	0.23	20
SMTI	56.9	25
Actual BW	95 lbs.	
Adj. WW	656 lbs.	
Adj. YW	1,203 lbs.	
ADG Post Weaning	3.42	
Adj. SC	36.9	



## 20 LVLS Dragonaut

Lim-Flex (68) Bull LFM 2103017  
DP / Red 01.03.2016 LVLS 1791D

BOHI TOP DOLLAR 7144T	AUTO DOLLAR GENERAL 122R
<b>MAGS ZAMINDAR</b>	CARROUSELS PINA COLADA
MAGS TAVISH	DHVO DEUCE 132R
	MAGS PUDDLES
BASIN MAX 602C	G T MAXIMUM
<b>LVLS 1791U</b>	BASIN ELINE ERICA 315U
LVLS MISS STABILIZER 1792E	MAYS BLACK JET
	LVLS 792B

- For those progressive cattlemen seeking a red bull with a great mama, you have found him!
- LVLS Dragonaut is a direct son of LVLS 1791U, who has an avg WW ratio of 106 across her progeny. She is also a 2016 Focus dam, as recognized by the North American Limousin Foundation.
- He is knocking on the door of a 100 YW EPD and is in the top 25% for marbling and SMTI.

	EPD	%Rank
CED	7	55
BW	2.1	65
WW	72	20
YW	103	30
MILK	27	35
CEM	6	50
SC	0.8	45
STAY	18	25
DOC	13	80
CW	32	30
REA	0.09	>95
YG	0.01	95
MARB	0.2	25
SMTI	57.62	25
Actual BW	90 lbs.	
Adj. WW	706 lbs.	
Adj. YW	1,220 lbs.	
ADG Post Weaning	3.21	
Adj. SC	35	



# EBFL Ypsilanti 420Y Sons



EBFL Ypsilanti 420Y



ADLL Axi 3007A

# ADLL Axi 3007A Sons

## 23 LVLS 159D

Lim-Flex (50) Bull HP / HB		LFM 2103680 02.04.2016		LVLS 159D		EPD	%Rank
S A V NORTH DAKOTA 7451	S A V MANDAN 5664	CED	9	35			
<b>ADLL AXL 3007A</b>	S A V PRIMROSE 4410	BW	1.6	55			
EF YADDA YADDA 809Y	DHVO DEUCE 132R	WW	69	30			
	MAGS RUFFLES	YW	96	45			
JCL LODESTAR 27L	HUNTS HILITER 245G	MILK	26	45			
<b>PBR'S WHAT A GAL 519W</b>	LOGAN'S CHEERLEADER 280G	CEM	6	50			
HOMEACRES EDWINA D59	HOMEACRES TRAVELER A27	SC	1.02	25			
	HOMEACRES EDWINA 969	STAY	15	60			
		DOC	-	-			
		CW	26	55			
		REA	0.45	55			
		YG	-0.1	75			
		MARB	0.15	25			
		\$MTI	55.54	30			
		Actual BW	89 lbs.				
		Adj. WW	634 lbs.				
		Adj. YW	1,166 lbs.				
		ADG Post Weaning	3.33				
		Adj. SC	37.5				

- Homozygous polled and homozygous black.
- This 50% Lim-Flex bull is out of one of our favorite F1 Lim-Flex cows, sired by JCL Lodestar 27L and going back to Angus icon and maternal legend N Bar Emulation EXT.
- 519D ranks in the top half of the breed for CED, WW, MK, TM, SC, MB and \$MTI, truly a balanced trait herd sire prospect with a proven pedigree and in an attractive package.
- Sound moving, easy keeping and loaded with hybrid vigor.

## 21 LVLS Optimizer 8799D

Lim-Flex (46) Bull HP / HB		LFM 2104808 01.03.2016		LVLS 8799D		EPD	%Rank
TC ABERDEEN 759	C R A BEXTOR 872 5205 608	CED	6	65			
<b>EBFL YPSILANTI 420Y</b>	TC BLACKBIRD 4034	BW	2.2	70			
MAGS RAMADA	TNUH BLUE PRINT 245H	WW	79	10			
	MAGS MANDA	YW	116	10			
POSS LEAD ON 419	CONNEALY LEAD ON	MILK	27	35			
<b>LVLS MISSY 8799U</b>	POSS BLUEBLOOD LADY 261	CEM	8	20			
LVLS8799M	LVLS FIRST-N-GOAL 2014K	SC	1.25	15			
	LVLS 3799G	STAY	-	-			
		DOC	15	70			
		CW	38	15			
		REA	0.5	45			
		YG	-0.14	65			
		MARB	0.23	20			
		\$MTI	62.11	15			
		Actual BW	90 lbs.				
		Adj. WW	659 lbs.				
		Adj. YW	1,246 lbs.				
		ADG Post Weaning	3.67				
		Adj. SC	37.0				

- Homozygous polled and homozygous black
- They don't get any more straight-lined than 8799D, he is ultra-correct from hooks to pins and comes out of the top of his shoulder with a great deal of angularity and attractiveness.
- To us, his growth profile is nearly ideal, he will inject extra dollars no matter when you opt to market progeny; either at weaning, yearling or terminally.
- A direct son of the \$120,000 valued EBFL Ypsilanti 420Y.

## 22 LVLS Double Shot 1067D

Lim-Flex (75) Bull HP / HB		LFM 2103651 01.22.2016		LVLS 1067D		EPD	%Rank
TC ABERDEEN 759	C R A BEXTOR 872 5205 608	CED	4	90			
<b>EBFL YPSILANTI 420Y</b>	TC BLACKBIRD 4034	BW	3.6	95			
MAGS RAMADA	TNUH BLUE PRINT 245H	WW	87	1			
	MAGS MANDA	YW	124	4			
AHCC WESTWIND W544	KAJO RESPONDER 120R	MILK	29	20			
<b>LVLS YOU THE ONE 1069Y</b>	AHCC MISS WULF HUNT R544	CEM	7	35			
LVLS1069P	LVLS DURAMAX 2408M	SC	1.2	15			
	LVLS EBONY 1069E	STAY	-	-			
		DOC	13	80			
		CW	43	10			
		REA	0.53	40			
		YG	-0.07	80			
		MARB	-0.01	45			
		\$MTI	54.55	30			
		Actual BW	90 lbs.				
		Adj. WW	733 lbs.				
		Adj. YW	1,288 lbs.				
		ADG Post Weaning	3.47				
		Adj. SC	39.9				

- Homozygous polled and homozygous black.
- This performance driven powerhouse recorded an adj WW of 733 and a ratio of 111 in this impressive contemporary group of bulls that were penciled in for our sale offering.
- Sired by the \$120,000 valued EBFL Ypsilanti 420Y, who is currently being used heavily by some of the most progressive breeders in the country to add weaning and yearling performance as well as SC and REA. Respectively, 1067D's dam has weaned her first 3 calves with an avg WW ratio of 106.
- LVLS Double Shot has explosive early growth and ranks in the top 1% of the breed for WW.

## 24 LVLS Optimizer 062D

Lim-Flex (50) Bull HP / HB		LFM 2103687 02.09.2016		LVLS 062D		EPD	%Rank
S A V NORTH DAKOTA 7451	S A V MANDAN 5664	CED	11	20			
<b>ADLL AXL 3007A</b>	S A V PRIMROSE 4410	BW	1.5	50			
EF YADDA YADDA 809Y	DHVO DEUCE 132R	WW	76	10			
	MAGS RUFFLES	YW	104	25			
S A V BISMARCK 5682	G A R GRID MAKER	MILK	25	55			
<b>LVLS ZOEY 62Z</b>	S A V ABIGALE 0451	CEM	8	20			
BBJY KARLEE 62U	MAGS MARKSMAN 224R	SC	1.25	15			
	KRVN RAFTER 434R	STAY	10	95			
		DOC	12	85			
		CW	30	40			
		REA	0.79	10			
		YG	-0.23	40			
		MARB	0.18	25			
		\$MTI	59.75	20			
		Actual BW	88 lbs.				
		Adj. WW	674 lbs.				
		Adj. YW	1,159 lbs.				
		ADG Post Weaning	3.03				
		Adj. SC	38.7				

- Homozygous polled and homozygous polled.
- Some of the very best F1 genetics stacked on top of each other in this calf's pedigree. 062D combines the genetics of the Etherton bred donor who now resides at Linhart Limousin, EF Yadda Yadda and one of the go to sires we used for several years in our Angus and Lim-Flex program, SAV Bismarck.
- A direct son of ADLL Axl, who is one of the most talked about young sires in breed who it appears is going to be used in several segments of the industry ranging from producing herd bulls to making show heifers.
- Exceptionally balance EPD profile with highlights including WW, SC and REA which are all in the top 15% or better.

# 25 LVLS Draft Day 807D

Lim-Flex (75) Bull LFM 2103707  
HP / HB 03.05.2016 LVLS 807D

S A V NORTH DAKOTA 7451	S A V MANDAN 5664
<b>ADLL AXL 3007A</b>	S A V PRIMROSE 4410
EF YADDA YADDA 809Y	DHVO DEUCE 132R
	MAGS RUFFLES
AUTO DOLLAR GENERAL 122R	LVLS SECRET WEAPON 4408K
<b>MCBN UNIQUA 807U</b>	AUTO KYRIA 232K
MCBN SEDUCTIVE LADY 603S	JCL LODESTAR 27L
	JCL COOL BREEZE

- Homozygous polled and homozygous black.
- Here at the ranch, we absolutely love the look this calf gives you from the profile, he is just so eye appealing and made so good.
- There is no doubt that the ADLL Axl progeny are going to make an impact in the breed, one can't help but excited with his potential as a sire, when he is consistently producing calves life this one.
- LVLS Draft Day 807D is a WW specialist with a TM EPD of 71, which puts him in the top 2% of the breed!

EPD	%Rank
CED	8 45
BW	1.8 60
WW	80 5
YW	113 15
MILK	31 15
CEM	8 20
SC	0.9 35
STAY	13 80
DOC	16 65
CW	32 30
REA	0.56 35
YG	-0.12 70
MARB	0.04 40
SMTI	54.89 30
Actual BW	89 lbs.
Adj. WW	715 lbs.
Adj. YW	1,288 lbs.
ADG Post Weaning	3.58
Adj. SC	38.9



# 26 LVLS Daybreak 604D

Lim-Flex (75) Bull LFM 2105759  
HP / HB 02.07.2016 LVLS 604D

S A V NORTH DAKOTA 7451	S A V MANDAN 5664
<b>ADLL AXL 3007A</b>	S A V PRIMROSE 4410
EF YADDA YADDA 809Y	DHVO DEUCE 132R
	MAGS RUFFLES
AUTO DOLLAR GENERAL 122R	LVLS SECRET WEAPON 4408K
<b>LVLS LOVER 604Y</b>	AUTO KYRIA 232K
MCBN SULTRY NIGHT 604S	JCL LODESTAR 27L
	JCL COOL BREEZE

- Homozygous polled and homozygous black
- We very rarely take the time as producers to take a registration number out of a catalog and look it up in the Limousin database, however I would encourage you to do so on the this 75% Lim-Flex sire. When you pull up his extended pedigree, you will notice that three generations back, every single animal in his pedigree is nationally recognizable in the Angus and Limousin breeds.
- 604D had an Adj. WW of 704 and is a son of LVLS Lover 604Y who is a breed leader for CEM and top 3% for TM.
- This is the type of bull that works on your Registered or Commercial mature cows and will inject a ton of growth into your next calf crop.

EPD	%Rank
CED	7 55
BW	2.2 70
WW	79 10
YW	106 25
MILK	30 15
CEM	9 10
SC	0.93 35
STAY	13 80
DOC	16 65
CW	32 30
REA	0.56 35
YG	-0.12 70
MARB	0.05 35
SMTI	54.96 30
Actual BW	89 lbs.
Adj. WW	704 lbs.
Adj. YW	1,189 lbs.
ADG Post Weaning	3.03
Adj. SC	37.7

# 27 LVLS Stabilizer 702D

Lim-Flex (75) Bull LFM 2103695  
HP / HB 01.29.2016 LVLS 702D

S A V NORTH DAKOTA 7451	S A V MANDAN 5664
<b>ADLL AXL 3007A</b>	S A V PRIMROSE 4410
EF YADDA YADDA 809Y	DHVO DEUCE 132R
	MAGS RUFFLES
AUTO DOLLAR GENERAL 122R	LVLS SECRET WEAPON 4408K
<b>MCBN TASHA 702T</b>	AUTO KYRIA 232K
AUTO MELANIA 271M	AUTO BLACK DAKOTA 129J
	QUAIL RUN EDITH BP

- Homozygous polled and homozygous black.
- Here is your solution for milk and grow! This 75% Lim-Flex bull's dam is a AUTO Dollar General daughter who is a trait leader for TM EPD and in the top 3% for MK.
- LVLS Stabilizer 702D himself is in the top 4% for TM and top 10% for MK.
- We recommend 702D for use on mature cows that need a little extra "gas in there tank" in order to increase profitability.

EPD	%Rank
CED	5 80
BW	2.4 70
WW	74 15
YW	105 25
MILK	32 10
CEM	6 50
SC	0.93 35
STAY	12 85
DOC	14 75
CW	34 25
REA	0.6 30
YG	-0.15 65
MARB	0-0.1 45
SMTI	51.98 40
Actual BW	86 lbs.
Adj. WW	649 lbs.
Adj. YW	1,204 lbs
ADG Post Weaning	3.47
Adj. SC	35.2

# 28 LVLS Stabilizer 7013D

% Limousin (62) Bull NXM 2103694  
DP / DB 02.15.2016 LVLS 7013D

S A V NORTH DAKOTA 7451	S A V MANDAN 5664
<b>ADLL AXL 3007A</b>	S A V PRIMROSE 4410
EF YADDA YADDA 809Y	DHVO DEUCE 132R
	MAGS RUFFLES
LVLS TOP CRITERIA 8862P	COLE WULF HUNT
<b>LVLS 7012U</b>	LVLS8862M
LVLS7012L	LVLS FARMER 4G

- Double polled and double black
- The cow power in 7013D's pedigree is unbelievable, his dam and maternal grand dam are two of our very most productive cows. Both are extremely fertile, low maintenance and profitable.
- If you are in the market for a bull that represents our breeding program and what we believe cattle should do year in and year out, look no further 7013D is the answer.
- The additional 80lbs at weaning that comes along with this herd sire, surely will be appealing to those producers selling calves at weaning.

EPD	%Rank
CED	9 35
BW	0.6 30
WW	80 5
YW	100 35
MILK	23 75
CEM	5 65
SC	0.65 65
STAY	12 85
DOC	14 75
CW	23 65
REA	0.65 20
YG	-0.23 40
MARB	-0.04 45
SMTI	52.02 40
Actual BW	84 lbs.
Adj. WW	742 lbs.
Adj. YW	1,214 lbs.
ADG Post Weaning	2.95
Adj. SC	40

# 29 LVLS Optimizer 9076D

% Limousin (50) Bull NXM 2104822  
DP / DB 01.03.2016 LVLS 9076D

S A V NORTH DAKOTA 7451	S A V MANDAN 5664
<b>ADLL AXL 3007A</b>	S A V PRIMROSE 4410
EF YADDA YADDA 809Y	DHVO DEUCE 132R
	MAGS RUFFLES
WLR DIRECT HIT	KRVN NASKAR 013N
<b>LVLS WENDY 9075W</b>	MAGS NIGHT AMBUSH

- Polled and Black
- ADLL AXL 3007A is one of the most exciting bulls that we have incorporated into our breeding program in recent years, his combination of popularity, pedigree and phenotype make him an easy solution for so many cows.
- 9076D's dam LVLS Wendy 9075W is a daughter of WLR Direct Hit, who has been used in over 90 herds across the country due to his popularity and reputation for adding fleshing ability and eye appeal.

EPD	%Rank
CED	1.4 50
BW	69 30
WW	92 55
YW	26 45
MILK	2 95
CEM	1.02 25
SC	-
STAY	-
DOC	-
CW	26 55
REA	0.75 10
YG	-0.3 15
MARB	-0.16 65
SMTI	46.15 60
Actual BW	89 lbs.
Adj. WW	626 lbs.
Adj. YW	1,130 lbs
ADG Post Weaning	3.15
Adj. SC	36.0

# DHVO Deuce 132R Sons



DHVO Deuce 132R

## 30 LVLS Duramax 89D

Lim-Flex (50) Bull LFM 2104811  
HP / HB 01.29.2016 LVLS 89D

DHVO DEUCE 132R  
AMY JO DHAN 20L  
S A V 8180 TRAVELER 004  
LVLS MISS TRAVELER 89Z  
BLACKCAP V935

BLACK DIAMOND  
QUAIL RUN RAMONA BP  
BLACK CAT DHAN 152G  
GPFF AMBER JO  
SITZ TRAVELER 8180  
BOYD FOREVER LADY 8003  
B T FREEWAY 91F  
BLACKCAP V632

- Homozygous polled and homozygous black.
- 89D is one of the highest weaning weight bulls in the offering and ranks in the top 1% of the breed.
- After 11 years we still find a purpose and use for the DHVO Deuce sons, they are so good and so predictable, we can't help but continue to utilize him, particularly on our Angus cows to give them some extra dimension and substance.
- LVLS Duramax 89D is the second highest ratio weaning weight calf we had in our large group of herd sire prospects, he recorded an 808 adj. ww and a ratio of 123 amongst his peers.

	EPD	%Rank
CED	7	55
BW	2	65
WW	93	1
YW	123	4
MILK	24	65
CEM	3	90
SC	1.55	3
STAY	-	-
DOC	19	55
CW	39	15
REA	0.34	75
YG	0	90
MARB	0.04	40
SMTI	57.04	25
Actual BW	94 lbs.	
Adj. WW	808 lbs.	
Adj. YW	1,256 lbs.	
ADG Post Weaning	2.80	
Adj. SC	38.2	



## 31 LVLS Stabilizer 9109D

Lim-Flex (75) Bull LFM 2105761  
Polled / HB 01.14.2016 LVLS 9109D

DHVO DEUCE 132R  
AMY JO DHAN 20L  
LVLS FARMER JOHN 7428P  
LVLS9101T  
KG EDEN 381

BLACK DIAMOND  
QUAIL RUN RAMONA BP  
BLACK CAT DHAN 152G  
GPFF AMBER JO  
LVLS FARMER JACK 5842M  
LVLS7428L  
S A F PHANTOM  
KG EDEN

- Homozygous black and polled
- Deuce does it again! DHVO Deuce is known worldwide for producing some of the very best breeding pieces in the Limousin breed. Still to date, he is the "go-to" proven, high accuracy Purebred sire of choice for many breeders.
- LVLS Stabilizer 9109D is a 75% sire that goes back to the Eden Angus cow family on the bottom side of her pedigree.
- You will love the design of this one when you get here and see him in person.

	EPD	%Rank
CED	5	80
BW	3.1	85
WW	80	5
YW	110	15
MILK	24	65
CEM	4	80
SC	1.45	4
STAY	14	70
DOC	-	-
CW	38	15
REA	0.41	60
YG	-0.09	75
MARB	-0.16	65
SMTI	47.79	55
Actual BW	90 lbs.	
Adj. WW	648 lbs.	
Adj. YW	1,170 lbs.	
ADG Post Weaning	3.26	
Adj. SC	37.5	

# Celebrating 34 YEARS in the Purebred Seedstock Business!!

# LSTO Best Effort 4833B Sons

## 32 LVLS Stabilizer 0566D

Lim-Flex (75) Bull LFM 2103683  
HP / HB 01.27.2016 LVLS 0566D

EXAR UPSHOT 0562B SITZ UPWARD 307R  
**LSTO BEST EFFORT 4833B** EXAR BARBARA T020  
SBLX XTRA SPECIAL DHVO DEUCE 132R  
MAGS MANUELA  
JCL LODESTAR 27L HUNTS HI-LITER 245G  
**LVLS YOUR AWAKE 566Y** LOGAN'S CHEERLEADER 280G  
EF WIDE AWAKE EXLR EXCELLANTE 251L  
TNUH MISS LOLITA 44L

- Homozygous polled and homozygous black
- This 75% Lim-Flex herd sire has a solid set of numbers backed by a very predictable pedigree that is generations deep in quality and marketability. Here you have a grandson of Angus legend, EXAR Upshot 0562B and Limousin royalty JCL Lodestar 27L.
- 0556D's sire is a direct son of the \$53,000 half interest valued donor SBLX Xtra Special who is a past San Antonio Supreme Champion. LSTO Best Effort is known for his extreme thickness, heavy bone work and massive foot size.

	EPD	%Rank
CED	11	20
BW	1.1	40
WW	68	30
YW	104	25
MILK	25	55
CEM	5	65
SC	1.08	25
STAY	-	-
DOC	21	45
CW	32	30
REA	0.47	50
YG	-0.07	80
MARB	0.2	25
SMTI	57.05	25
Actual BW	84 lbs.	
Adj. WW	630 lbs.	
Adj. YW	1,148 lbs.	
ADG Post Weaning	3.24	
Adj. SC	37.1	



LSTO Best Effort 4833B

## 33 LVLS 024D

Lim-Flex (25) Bull LFM 2103663  
HP / HB 02.21.2016 LVLS 024D

EXAR UPSHOT 0562B SITZ UPWARD 307R  
**LSTO BEST EFFORT 4833B** EXAR BARBARA T020  
SBLX XTRA SPECIAL DHVO DEUCE 132R  
MAGS MANUELA  
MYTTY IN FOCUS S A F FOCUS OF E R  
**LVLS YOUR LADY 24Y** MYTTY COUNTESS 906  
FRENZEN LADY M48 K G CONSTITUTION  
FRENZEN LADY K153

- Homozygous polled and homozygous black
- This late February calf is truly a performance stand out and the pick of the select few who have been through the bulls.
- 024D's pedigree is stacked to optimize phenotype, growth and calving ease through the influence of SBLX Xtra Special, Mytty In Focus and EXAR Upshot; as planned, he has expressed all of those traits to date.
- Paternal grand dam, Xtra Special is a past San Antonio Supreme Champion female, who has gone on to surpass expectations in terms of production and has generated some top shelf daughters and herd sires.
- 81 WW EPD and 1.41 SC EPD rank him in the top 4%, equally impressive he is in the top 3% for MB EPD and top 2% for SMTI.

	EPD	%Rank
CED	12	15
BW	1.2	45
WW	81	4
YW	124	4
MILK	25	55
CEM	6	50
SC	1.41	4
STAY	-	-
DOC	23	35
CW	32	30
REA	0.51	45
YG	-0.04	85
MARB	0.56	3
SMTI	72.88	2
Actual BW	90 lbs.	
Adj. WW	791 lbs.	
Adj. YW	1,346 lbs.	
ADG Post Weaning	3.47	
Adj. SC	40.3	



### WATCH OR BID LIVE

The 26th Annual Lonely Valley Keepin' Kind Bull Sale can be viewed and bids can be accepted through [www.dvauction.com](http://www.dvauction.com).

Reserve Division  
Champion Lim-Flex Bulls  
2017 NWSS



# MAGS Zarah Sons



MAGS Zarah



Marris

## 36 LVLS Optimizer 3941D

Lim-Flex (59) Bull LFM 2103670  
HP / Black 02.16.2016 LVLS 3941D

MAGS ZARAH	MAGS WHITCOMB	BT CROSSOVER 758N EXLR 199H
	AUTO CARMINDA 656S	JCL LODESTAR 27L AUTO CARMINDA 872P
LVLS 3942X	LAGRAND VRD 7185	VERMILION DATELINE 7078 LAGRAND LUCY 4206
	LVLS 942S	AUTO BLACK DAKOTA 129J LVLS DEL MONICA 942D

- Homozygous polled and heterozygous black
- This 59% Lim-Flex has the performance profiles that we like all day long, they are so easy to work with and offer a ton of flexibility. Anytime we come across one with numbers like this, it is a marketing dream as he is so appealing to so many producers.

- With double digit CED and 110 YW EPD's as well as a strong carcass data and maternal profile, you can't go wrong with LVLS Optimizer 3941D. You can use him on heifers this year while he is still young and maturing and then kick him out with cows next year and not have to worry. Ton of opportunity in this MAGS Zarah son, who also traces back to 442S, one of our all-time most productive foundation cows here at the ranch. She was a Lim-Flex 13 years before Lm-Flex were established, we have always know that the Angus Limousin crossed make great cattle!

	EPD	%Rank
CED	10	25
BW	0.8	35
WW	71	20
YW	110	10
MILK	31	15
CEM	9	10
SC	0.4	85
STAY	12	85
DOC	10	90
CW	35	20
REA	0.47	50
YG	-0.12	70
MARB	0.2	25
SMTI	58.09	25
Actual BW	81 lbs.	
Adj. WW	713 lbs.	
Adj. YW	1,319 lbs.	
ADG Post Weaning	3.79	
Adj. SC	39.1	

## 34 LVLS Dracula 1011D

Lim-Flex (68) Bull LFM 2103019  
DP / DB 01.11.2016 LVLS 1011D

MAGS ZARAH	MAGS WHITCOMB	BT CROSSOVER 758N EXLR 199H
	AUTO CARMINDA 656S	JCL LODESTAR 27L AUTO CARMINDA 872P
LVLS YOOHOO 1792Y	LVLS OLD SCHOOL 5751U	JCL LODESTAR 27L LVLS 5750S
	LVLS 1792W	BASIN MAX 602C LVLS MISS STABILIZER 1792E

- This 68% Lim-Flex was born unassisted and at a very desirable 85lbs, for us that is ideal, and it seems to be where our customers desire them as well.
- MAGS Zarah is a maternal brother to MAGS Yip, both Yip and Zarah are producing some of the top notch show cattle in the industry due to the eye appeal, performance and structural soundness that they are passing down. This Zarah son is very similar to his A.I. sire in his appearance.
- Solid performance data in terms of calving ease traits and maternal ability.

	EPD	%Rank
CED	10	25
BW	0.6	30
WW	58	70
YW	97	40
MILK	30	15
CEM	9	10
SC	0.46	85
STAY	16	45
DOC	13	80
CW	31	35
REA	0.36	70
YG	-0.06	85
MARB	0.12	30
SMTI	51.35	40
Actual BW	85 lbs.	
Adj. WW	631 lbs.	
Adj. YW	1,140 lbs.	
ADG Post Weaning	3.18	
Adj. SC	35.5	

## 35 LVLS Drifter 36D ET

% Limousin (77) Bull NXM 2109275  
HP / HB 01.02.2016 LVLS 36D

MAGS ZARAH	MAGS WHITCOMB	BT CROSSOVER 758N EXLR 199H
	AUTO CARMINDA 656S	JCL LODESTAR 27L AUTO CARMINDA 872P
LVLS7428L	LVLS COWBOY 015F	JCL BLACK OUT LVLS REBECA
	LVLS MS STABILIZER 2408E	LVLS POLLED BLACK JACK LVLS 408X

- Homozygous polled and homozygous black.
- Here's a high Milk sire, who is a maternal brother to LVLS Farmer John, which makes him a son of the great LVLS 7248L.
- Our good friend and industry leader, Charles Linhart selected 7248L to be the foundation donor for one his son's herds. We have been privileged to watch her impact be felt in both his program and ours. Her progeny, such as Drifter 36D are "good stock" they are fault free, low maintenance and get the job done year after year.
- 77% Limousin blood in this young herd sire prospect.

	EPD	%Rank
CED	5	80
BW	2.4	70
WW	61	60
YW	101	35
MILK	38	1
CEM	5	65
SC	0.65	65
STAY	16	45
DOC	20	50
CW	35	20
REA	0.6	30
YG	-0.12	70
MARB	-0.1	55
SMTI	45.46	65
Actual BW	88 lbs.	
Adj. WW	684 lbs.	
Adj. YW	1,211 lbs.	
ADG Post Weaning	3.29	
Adj. SC	37.0	

## 37 LVLS Stablizer 780D

Lim-Flex (59) Bull LFM 2103703  
DP / DB 01.04.2016 LVLS 780D

MAGS ZARAH	MAGS WHITCOMB	BT CROSSOVER 758N EXLR 199H
	AUTO CARMINDA 656S	JCL LODESTAR 27L AUTO CARMINDA 872P
LVLS CAMILLE 781A	S A V BISMARCK 5682	G A R GRID MAKER S A V ABIGALE 0451
	CFLX CAMILE 781T	EXLR EXCELLANTE 251L AUTO CAMILE 218G

- Double Polled and double black.
- The influence of MAGS Zarah is apparent in this offering, each and every one of these bulls are will impress you with their functional look and balanced EPD profiles.
- 780D is double digits for CED and over 100 for YW, and is the top 40% of better for CW, REA and MB which makes him an intriguing breeding piece.

	EPD	%Rank
CED	11	20
BW	2.1	65
WW	64	45
YW	106	25
MILK	25	55
CEM	8	20
SC	0.74	55
STAY	13	80
DOC	12	85
CW	33	30
REA	0.54	40
YG	-0.14	65
MARB	0.17	25
SMTI	55.71	30
Actual BW	85 lbs.	
Adj. WW	613 lbs.	
Adj. YW	1,186 lbs.	
ADG Post Weaning	3.58	
Adj. SC	35.8	



# MAGS Yurika Sons

## 38 LVLS Maximizer 1006D

% Limousin (79) Bull Polled / DB  
NXM 2103116 01.27.2016 LVLS 1006D

		EPD	%Rank
MAGS UNIVERSE 135U	LH RODEMASTER 338R	8	45
<b>MAGS YURIKA</b>	MAGS ROSAMOND	BW	1.9 60
MAGS URIKA	LVLS SECRET WEAPON 4408K	WW	67 35
	AUTO KYRIA 232K	YW	104 25
LVLS OLD SCHOOL 5751U	JCL LODESTAR 27L	MILK	31 15
<b>LVLS A PLUS 794A</b>	LVLS 5750S	CEM	8 20
LVLS 794T	LVLS DURAMAX 2408M	SC	0.82 45
	LVLS 794B	STAY	12 85
		DOC	15 70
		CW	31 35
		REA	0.12 95
		YG	-0.03 90
		MARB	0.09 30
		SMTI	52.5 40
		Actual BW	88 lbs.
		Adj. WW	658 lbs.
		Adj. YW	1,281 lbs.
		ADG Post Weaning	3.75
		Adj. SC	39.6

- MAGS Yurika was an intriguing investment for our family, he is a MAG Universe that goes back to LVLS Secret Weapon that was bred right here on this property, it was neat way to incorporate new genetics as well as genetics that we knew worked well in our environment.
- Just a four-year-old, 1006D's dam has weaned two calves with an avg adj WW ratio of 106. LVLS A PLUS 794A is certainly one that we have high hopes for going forward.
- LVLS Maximizer 1006D is one that will be a maternal influencer, he is in the top 15% of the breed for MK and TM.

## 39 LVLS Optimizer 8061D

Lim-Flex (47) Bull DP / HB  
LFM 2103122 01.29.2016 LVLS 8061D

		EPD	%Rank
MAGS UNIVERSE 135U	LH RODEMASTER 338R	9	35
<b>MAGS YURIKA</b>	MAGS ROSAMOND	BW	1 40
MAGS URIKA	LVLS SECRET WEAPON 4408K	WW	70 25
	AUTO KYRIA 232K	YW	111 15
CONNEALY CONSENSUS 7229	CONNEALY CONSENSUS	MILK	29 20
<b>LVLS ASHTYN 8061A</b>	BLUE LILLY OF CONANGA 16	CEM	5 65
LVLS 8061X	S A V 5175 BANDO 0699	SC	0.9 35
	LVLS8061M	STAY	- -
		DOC	19 55
		CW	27 50
		REA	0.32 75
		YG	-0.01 90
		MARB	0.55 3
		SMTI	69.2 4
		Actual BW	86 lbs.
		Adj. WW	737 lbs.
		Adj. YW	1,399 lbs.
		ADG Post Weaning	4.14
		Adj. SC	38.7

- Homozygous black and double polled
- LH Rodemaster, JCL Lodestar, Connealy Consensus and SAV 5175 Bando 0699 all represented in 8061D's pedigree; some of the very best from both the Limousin and Angus gene pools.
- LVLS Optimizer 8061D's dam is just a three-year-old, but she is already left a positive impression on all of us here at the ranch. She is one of the highest SMTI and marbling females in our production system, yet she still does a phenomenal job raising a calf. 8061D weaned with an adj WW of 737 and a ratio of an impressive 111.

## 40 LVLS Stabilizer 1038D

Lim-Flex (62) Bull DP / DB  
LFM 2103126 02.19.2016 LVLS 1038D

		EPD	%Rank
MAGS UNIVERSE 135U	LH RODEMASTER 338R	9	35
<b>MAGS YURIKA</b>	MAGS ROSAMOND	BW	1.5 50
MAGS URIKA	LVLS SECRET WEAPON 4408K	WW	74 15
	AUTO KYRIA 232K	YW	104 25
LVLS SECRET WEAPON 4408K	LVLS FARMER 4G	MILK	34 4
<b>LVLS MISS 9100Z</b>	LVLS 408H	CEM	8 20
LVLS NEW DESIGN 9100P	BON VIEW DESIGN 208	SC	0.95 35
	L V MISS PROMPTER 9100	STAY	12 85
		DOC	15 70
		CW	30 40
		REA	0.01 >95
		YG	-0.03 90
		MARB	0.24 20
		SMTI	59.34 20
		Actual BW	87 lbs.
		Adj. WW	750 lbs.
		Adj. YW	1,250 lbs.
		ADG Post Weaning	3.13
		Adj. SC	37.2

- Double polled and double black
- Marbling and maternal, while not sacrificing growth! This rare combination is extremely valuable and offers you the option to "turn him out and not worry about it." There is something to be said about bulls that you can mate to virtually everything in your operation and get genetic advancement and income potential no matter who they breed.
- LVLS Stabilizer 1038D is a MAGS Yurika son who records a SMTI of 59.34 and ranks in the top 2 % for TM.

## 41 LVLS Stabilizer 1042D

Lim-Flex (62) Bull HP / HB  
LFM 2103217 01.21.2016 LVLS 1042D

		EPD	%Rank
MAGS UNIVERSE 135U	LH RODEMASTER 338R	7	55
<b>MAGS YURIKA</b>	MAGS ROSAMOND	BW	1.9 60
MAGS URIKA	LVLS SECRET WEAPON 4408K	WW	63 50
	AUTO KYRIA 232K	YW	96 45
CHR WHITE ROSE 162W	GPFF BLAQUE RULON	MILK	27 35
<b>LVLS9132Z</b>	CHR MOLLY ROSE 001M	CEM	5 65
LVLS 9133R	G A R 6807 TRAVELER 4144	SC	0.7 55
	L V MISS PROMPTER 9133	STAY	13 80
		DOC	12 85
		CW	30 40
		REA	0.2 90
		YG	-0.1 75
		MARB	0.12 30
		SMTI	53.09 35
		Actual BW	90 lbs.
		Adj. WW	624 lbs.
		Adj. YW	1,176 lbs.
		ADG Post Weaning	3.45
		Adj. SC	37.9

- Homozygous black and homozygous polled
- For those who appreciate a blending of historically solid and modern genetics, 1042D is the answer. Appreciating maternal traits in the Angus cows families in this country, seeing Rally Prompter in this bulls pedigree should intrigue you. The historic Rally Farms in Millbrook, NY was known at one time for being the source for heavy milking, beautiful uddered cows.
- MAGS Yurika is a LH Rodemaster grandson, who was a top lot in a past Magness sale.



### WATCH OR BID LIVE

The 25th Annual Lonely Valley Keepin' Kind Bull Sale can be viewed and bids can be accepted through [www.dvauction.com](http://www.dvauction.com).

# AUTO Heavy Duty 174A Sons



AUTO Heavy Duty 174A



## 42 LVLS 566D

Lim-Flex (62) Bull LFM 2103682  
DP / HB 01.26.2016 LVLS 566D

MAGS WAZOWSKI DHVO DEUCE 132R  
AUTO HEAVY DUTY 174A BOHI RED ROBIN 282R  
LVLS 3615W MYTTY IN FOCUS  
LVLS 3615S  
MAGS Y-AXIS TC ABERDEEN 759  
LVLS BARE ASSETS 566B MAGS UAHUKA  
LVLS YOU AWAKE 566Y JCL LODESTAR 27L  
EF WIDE AWAKE

- Polled and homozygous black.
- 566D is one of the big data spread bulls in this year's offering, he ranks in the top 15% for CED and records a 76 WW and 112 YW EPD, he also compiles a complete terminal profile with a 33 CW, .47 REA and .19 MB EPD.
- Sired by AUTO Heavy Duty 174A who is the result of breeding the big growth numbered MAGS Wazowski with the highly maternal donor of Massey Limousin, LVLS 3615. This first calf crop by him are particularly impressive, what an exciting future for 566D and his sibs.

	EPD	%Rank
CED	12	15
BW	1.4	50
WW	76	10
YW	112	10
MILK	24	65
CEM	8	20
SC	1.33	10
STAY	-	-
DOC	-	-
CW	33	30
REA	0.47	50
YG	-0.12	70
MARB	0.19	25
SMTI	59.38	20
Actual BW	89 lbs.	
Adj. WW	667 lbs.	
Adj. YW	1,231 lbs.	
ADG Post Weaning	3.53	
Adj. SC	39.6	

## 43 LVLS Optimizer 3D

Lim-Flex (46) Bull LFM 2103671  
HP / HB 02.08.2016 LVLS 2103671

MAGS WAZOWSKI DHVO DEUCE 132R  
AUTO HEAVY DUTY 174A BOHI RED ROBIN 282R  
LVLS 3615W MYTTY IN FOCUS  
LVLS 3615S  
CONNEALY CONSENSUS 7229 CONNEALY CONSENSUS  
LVLS BRIDESMAID 3B BLUE LILLY OF CONANGA 16  
LVLS7428L LVLS COWBOY 015F  
LVLS MS STABILIZER 2408E

- Homozygous polled and homozygous black
- Here is a 46% Lim-Flex herd sire prospect that is truly one that is going to create the Keepin Kind on the maternal side of the scenario, especially.
- Ranks in the top 3% for WW and top 2% for TM with a 71 EPD. He calculates out to be in the 4% for SMTI.
- Sired our balanced trait herd sire, AUTO Heavy Duty 174 and traces back to our maternal powerhouse of a females LVLS 7428L who has 41 progeny at a 99 ratio for BW and 17 at 104 for REA.

	EPD	%Rank
CED	9	35
BW	0.9	40
WW	83	3
YW	118	10
MILK	29	20
CEM	5	65
SC	1.46	4
STAY	-	-
DOC	-	-
CW	34	25
REA	0.53	40
YG	-0.01	90
MARB	0.47	10
SMTI	69.95	4
Actual BW	79 lbs.	
Adj. WW	757 lbs.	
Adj. YW	1,275 lbs.	
ADG Post Weaning	3.24	
Adj. SC	39.2	

# LVLS Big Lebowski 1025B Sons

## 44 LVLS Optimizer 9133D

Lim-Flex (35) Bull LFM 2103128  
HP / HB 02.05.2016 LVLS 9133D

LVLS X-TRA PROFIT 2014 AUTO DOLLAR GENERAL 122R  
LVLS BIG LEBOWSKI 1025B JCL MAYBERRY 62S  
LVLS 4867U TC FREEDOM 104  
LVLS 2867H  
BON VIEW NEW DESIGN 878 B/R NEW DESIGN 036  
LVLS ND 878 9133T BON VIEW GAMMER 85  
LVLS 9133R G A R 6807 TRAVELER 4144  
L V MISS PROMPTER 9133

- Homozygous polled and homozygous black
- 35% Lim-Flex herd sire prospect with the likes of LVLS X-Tra Profit, TC Freedom, Bon View New Design 878 and DHD Traveler 6807 in his stacked pedigree. Some of the very best ever created in both the Limousin and Angus breeds.
- 3.41 WDA at 205 days works out to a ratio of 104 for 9133D.
- Top 20% for SMTI.

	EPD	%Rank
CED	10	25
BW	1.6	55
WW	69	30
YW	100	35
MILK	28	30
CEM	8	20
SC	0.85	45
STAY	15	60
DOC	12	85
CW	32	30
REA	0.18	95
YG	-0.06	85
MARB	0.24	20
SMTI	58.72	20
Actual BW	90 lbs.	
Adj. WW	688 lbs.	
Adj. YW	1,155 lbs.	
ADG Post Weaning	2.92	
Adj. SC	36.6	

# 45 LVLS Optimizer 1040D

Lim-Flex (35) Bull LFM 2106220  
HP / Black 01.26.2016 LVLS 1040D

		EPD	%Rank
LVLS X-TRA PROFIT 2014	AUTO DOLLAR GENERAL 122R	CED	11 20
<b>LVLS BIG LEBOWSKI 1025B</b>	JCL MAYBERRY 62S	BW	0.6 30
LVLS 4867U	TC FREEDOM 104	WW	65 45
	LVLS 2867H	YW	101 35
S A V BISMARCK 5682	G A R GRID MAKER	MILK	25 55
<b>LVLS MISS BISMARCK 9102Y</b>	S A V ABIGALE 0451	CEM	8 20
LVLS MISS TRAVELER 9100W	S A V 8180 TRAVELER 004	SC	1.26 15
	L V MISS PROMPTER 910	STAY	11 90
		DOC	11 85
		CW	31 35
		REA	0.45 55
		YG	-0.14 65
		MARB	0.28 15
		SMTI	60.74 15
		Actual BW	84 lbs.
		Adj. WW	651 lbs.
		Adj. YW	1,151 lbs.
		ADG Post Weaning	3.13
		Adj. SC	37.1

- Homozygous polled
- One of the most desirable crosses in the past decade in the Angus breed has been the Bismarcks back on the 004 daughters, the dam of 1040D is an exceptional Angus cow who we think quite a bit of.
- 11 CED, 0.6 BW, 65 WW and 101 YW EPD's make LVLS Optimizer 1040D as appealing on paper as he is in the pasture.
- Raised a twin to another bull and still had an adj WW of 651 lbs.

# 47 LVLS Maximizer 1008D

Lim-Flex (73) Bull LFM 2103118  
Scurred / HB 01.19.16 LVLS 1008D

		EPD	%Rank
LVLS X-TRA PROFIT 2014	AUTO DOLLAR GENERAL 122R	CED	8 45
<b>LVLS BIG LEBOWSKI 1025B</b>	JCL MAYBERRY 62S	BW	1.7 55
LVLS 4867U	TC FREEDOM 104	WW	69 30
	LVLS 2867H	YW	94 50
	LVLS SECRET WEAPON 4408K	MILK	32 10
<b>LVLS 795P</b>	LVLS FARMER 4G	CEM	8 20
	LVLS 408H	SC	0.78 55
	LVLS 795B	STAY	16 45
		DOC	15 70
		CW	29 40
		REA	0.16 95
		YG	-0.14 65
		MARB	-0.06 50
		SMTI	48.54 50
		Actual BW	86 lbs.
		Adj. WW	699 lbs.
		Adj. YW	1,166 lbs.
		ADG Post Weaning	2.92
		Adj. SC	37.1

- Throughout this offering you will notice that there are several dams that have "paid their dues" and withstood the test of time here Nebraska. The terrain here and the environment can be harsh at times, but we still expect a lot out of our females and truly feel that this in turn provides our bull customers with a greater bang for their buck. Our bulls are designed to be a long term investment and not just a quick fix.
- 1008D's dam has 10 recorded natural progeny with an avg adj WW ratio of 105.
- His dam performance is reflected in his epd profile, 1008D ranks in the top 10% of the breed for MK and TM.
- Big actual BW to WW spread; he has a ratio of 97 for BW and a 105 for YW.

# 46 LVLS Stabilizer 1035D

Lim-Flex (60) Bull LFM 2103540  
DP / HB 02.05.2016 LVLS 1035D

		EPD	%Rank
LVLS X-TRA PROFIT 2014	AUTO DOLLAR GENERAL 122R	CED	10 25
<b>LVLS BIG LEBOWSKI 1025B</b>	JCL MAYBERRY 62S	BW	1.5 50
LVLS 4867U	TC FREEDOM 104	WW	77 10
	LVLS 2867H	YW	110 15
LVLS OLD SCHOOL 5751U	JCL LODESTAR 27L	MILK	26 45
<b>LVLS7308Y</b>	LVLS 5750S	CEM	8 20
LVLS MISS FOCUS 7307W	MYTTY IN FOCUS	SC	1.05 25
	LVLS ND 878 7307T	STAY	15 60
		DOC	15 70
		CW	35 20
		REA	0.2 90
		YG	-0.06 85
		MARB	0.17 25
		SMTI	58.3 20
		Actual BW	89 lbs.
		Adj. WW	725 lbs.
		Adj. YW	1,277 lbs.
		ADG Post Weaning	3.45
		Adj. SC	38.6

- Homozygous black and double polled
- We don't think you could format a birth to yearling set of EPD's anymore idea than 1035D's! He is a 10 CED, 77 WW, 110 YW; with numbers like this, there are so many options in terms of mating flexibility.
- Sired by our homebred herd sire and visitor favorite, LVLS Big Lebowski 1025B.
- LVLS 7308Y, dam of 1035D is another one of our standout producers, she has an avg adj WW ratio of 106 on her progeny.

# 48 LVLS Optimizer 770D

Lim-Flex (35) Bull LFM 2103114  
HP / HB 02.12.2016 LVLS 770D

		EPD	%Rank
LVLS X-TRA PROFIT 2014	AUTO DOLLAR GENERAL 122R	CED	10 25
<b>LVLS BIG LEBOWSKI 1025B</b>	JCL MAYBERRY 62S	BW	1.4 50
LVLS 4867U	TC FREEDOM 104	WW	74 15
	LVLS 2867H	YW	107 20
BON VIEW NEW DESIGN 1407	B/R NEW DESIGN 036	MILK	30 15
<b>LVLS 770R</b>	BON VIEW PRIDE 664	CEM	6 50
	B T FREEWAY 91F	SC	0.95 35
	BLACKCAP V935	STAY	- -
		DOC	8 95
		CW	29 40
		REA	0.26 85
		YG	-0.07 80
		MARB	0.35 15
		SMTI	63.97 10
		Actual BW	92 lbs.
		Adj. WW	759 lbs.
		Adj. YW	1,292 lbs.
		ADG Post Weaning	3.33
		Adj. SC	40.2

- Homozygous polled and homozygous black
- Here is a double digit calving ease sire prospect that is out of one of our favorite Bon View New Design 1407 daughters here at the ranch, she has consistently produced calves the "go and grow," they come easy, get up and go quick and grow fast. They are ideal in our environment.
- 770D is one cool dude as you would gather should be the case given he is the son of LVLS Big Lebowski, one of our young herd sires that we sampled last year. We were confident that he would make good ones given his pedigree.
- Exceptionally balanced EPD profile from birth through the terminal traits, also is one of that pushed the scales down and a ratio 114 at WW with an ADJ 205 day weight of 759 lbs.

## LVLS X-tra Profit 2014 Sons



LVLS X-tra Profit 2014

# 49 LVLS Drop Kicker 1022D

Lim-Flex (60) Bull LFM 2103041  
DP / HB 01.05.2016 LVLS 1022D

		EPD	%Rank
AUTO DOLLAR GENERAL 122R	LVLS SECRET WEAPON 4408K	CED	8 45
<b>LVLS X-TRA PROFIT 2014</b>	AUTO KYRIA 232K	BW	1.6 55
JCL MAYBERRY 62S	CARROUSELS PURE POWER	WW	78 10
	JCL MAYBERRY	YW	114 10
POSS TARGET 6110	CONNEALY TARGET 914	MILK	28 30
<b>LVLS 4867Y</b>	POSS ELLUNMERE 204	CEM	7 35
LVLS 4867U	TC FREEDOM 104	SC	0.75 55
	LVLS 2867H	STAY	- -
		DOC	15 70
		CW	38 15
		REA	0.32 75
		YG	-0.07 80
		MARB	0.04 40
		SMTI	54.11 35
		Actual BW	87 lbs.
		Adj. WW	726 lbs.
		Adj. YW	1,307 lbs.
		ADG Post Weaning	3.63
		Adj. SC	37.1

- Homozygous black and double polled, 60% Lim-Flex bull herd sire prospect
- This son of LVLS X-tra Profit 2014, one of the stoutest sons of Dollar General to come along.
- He posts a 1.6 for birth weight, 78 for weaning weight, 114 for yearling, and 28 for milk.



# 50 LVLS Maximizer 1027D

Lim-Flex (71) Bull LFM 2103099  
 HP / Black 01.05.2016 LVLS 2103099

AUTO DOLLAR GENERAL 122R	LVLS SECRET WEAPON 4408K
<b>LVLS X-TRA PROFIT 2014</b>	AUTO KYRIA 232K
JCL MAYBERRY 62S	CARROUSELS PURE POWER
	JCL MAYBERRY
	S A F FOCUS OF E R
MYTTY IN FOCUS	MYTTY COUNTNESS 906
<b>LVLS MISS FOCUS 5741Y</b>	LVLS TOP CRITERIA 8862P
LVLS 5741U	LVLS5741J

- Several who have been through have thought this may be the most exciting bull we are offering this year. Those who like soft structured, moderate frame and easy fleshing bulls probably don't need to look much further than 1027D.
- To say this calf is loaded with muscle and internal capacity would be an understatement! At weaning time, he weighed 795 pounds and adjusted to a 116 ratio and in a contemporary group of 59, he ranked second.
- Sure, his dam deserves a bunch of that credit, but this calf is far from done now that he is on his own.
- Positive for both CW and MB, along with being in the top 5% for TM and top 2% for WW EPD, the mating possibilities are endless. And there is no Deuce or Lodestar in his pedigree giving you even more versatility.

	EPD	%Rank
CED	8	45
BW	2.8	80
WW	84	2
YW	123	4
MILK	26	45
CEM	5	65
SC	0.9	35
STAY	16	45
DOC	19	55
CW	36	20
REA	0.38	65
YG	-0.1	75
MARB	0.07	35
SMTI	56.68	25
Actual BW	95 lbs.	
Adj. WW	768 lbs.	
Adj. YW	1,420 lbs.	
ADG Post Weaning	4.08	
Adj. SC	39.1	

# 51 LVLS Maximizer 1002D

PB Limousin (93) Bull NPM 2103034  
 DP / HB 01.01.2016 LVLS 1002D

AUTO DOLLAR GENERAL 122R	LVLS SECRET WEAPON 4408K
<b>LVLS X-TRA PROFIT 2014</b>	AUTO KYRIA 232K
JCL MAYBERRY 62S	CARROUSELS PURE POWER
	JCL MAYBERRY
	COLE WULF HUNT
LVLS TOP CRITERIA 8862P	LVLS8862M
<b>LVLS 306X</b>	LVLS POLLED JUSTICE 0601E
LVLS 306P	LVLS 306W

- We just love this bull's pedigree, with AUTO Dollar General, LVLS Top Criteria and going back to one of our top producing females, LVLS 306P; we feel that you can't go wrong.
- Here at Lonely Valley, we select for longevity and cows that will pay for themselves year after year, 1002D's pedigree is packed with the staying power that we demand and offer to our customers. Our bulls are in it for the long haul, as so many of our clients will attest.
- With 699 Adj WW, 1002D has a ratio of 105 within his large contemporary group; his dam has five recorded progeny with an avg WW ratio of 102.

	EPD	%Rank
CED	6	65
BW	3	85
WW	75	15
YW	107	20
MILK	27	35
CEM	4	80
SC	0.5	75
STAY	12	85
DOC	13	80
CW	29	40
REA	0.53	40
YG	-0.19	50
MARB	-0.2	70
SMTI	45.23	65
Actual BW	95 lbs.	
Adj. WW	699 lbs.	
Adj. YW	1,370 lbs.	
ADG Post Weaning	4.19	
Adj. SC	38.9	

# 52 LVLS Maximizer 1005D

PB Limousin (92) Bull NPM 2103117  
 DP / HB 01.12.2016 LVLS 1005D

AUTO DOLLAR GENERAL 122R	LVLS SECRET WEAPON 4408K
<b>LVLS X-TRA PROFIT 2014</b>	AUTO KYRIA 232K
JCL MAYBERRY 62S	CARROUSELS PURE POWER
	JCL MAYBERRY
	HUNTS HI-LITER 245G
JCL LODESTAR 27L	LOGAN'S CHEERLEADER 280G
<b>LVLS 794W</b>	LVLS DURAMAX 2408M
LVLS 794T	LVLS 794B

- Double Polled and Homozygous black
- This high percentage Limousin purebred bull is one that hasn't stopped growing since he hit the ground! He crossed the scales at 205 days with an adj WW of 713. He is certainly meeting the expectations set forth with his 80 WW and 110 YW EPD's!
- His dam is truly a standout, she is a NALF Focus Dam and has six recorded progeny with an avg WW ratio of 105 and BW ratio of 98. She's the Keepin' Kind! Very typical of the majority of our JCL Lodestar daughters!

	EPD	%Rank
CED	6	65
BW	2.7	80
WW	80	5
YW	112	15
MILK	28	30
CEM	7	35
SC	0.75	55
STAY	17	35
DOC	17	60
CW	39	15
REA	0.28	85
YG	-0.01	90
MARB	-0.12	55
SMTI	48.31	50
Actual BW	92 lbs.	
Adj. WW	713 lbs.	
Adj. YW	1,213 lbs.	
ADG Post Weaning	3.13	
Adj. SC	38.4	

# LVLS Focus 5047Y Sons

# 53 LVLS Optimizer 1050D

Lim-Flex (43) Bull LFM 2103132  
 DP / HB 01.02.2016 LVLS 1050D

MYTTY IN FOCUS	S A F FOCUS OF E R
<b>LVLS FOCUS 5047Y</b>	MYTTY COUNTNESS 906
LVLS 5048 S	BON VIEW NEW DESIGN 1407
	BLACKCAP V935
	LVLS FARMER 4G
LVLS DOUBLEDOWN 3615K	LVLS GABRIELLA 3615G
<b>LVLS9731N</b>	MAYS BLACK JET
LVLS MS STABILIZER 2731F	LJ MISS TED 331B

- When selecting for SMTI it is also important to watch BW and CED in order to maintain the appropriate balance. 1050D ranks in the top 15% for both SMTI and BW EPD, as well as in the top 10% for SC. We work hard on foot and paper to produce the kind of cattle that our customers will appreciate.
- COLE First Down may possibly be one of the top bulls in the Limousin breed in terms of long-term, positive impact. LVLS -1050D is double bred COLE First Down.
- This negative BW and double digit CED bull is set to work on heifers or mature cows. A Mytty In Focus grandson, makes us even more confident that he is proven calving ease.

	EPD	%Rank
CED	10	25
BW	-0.4	15
WW	63	50
YW	94	50
MILK	28	30
CEM	5	65
SC	1.35	10
STAY	-	-
DOC	17	60
CW	24	60
REA	0.13	95
YG	-0.04	85
MARB	0.35	15
SMTI	60.97	15
Actual BW	82 lbs.	
Adj. WW	660 lbs.	
Adj. YW	1,227 lbs.	
ADG Post Weaning	3.54	
Adj. SC	34.3	

# 54 LVLS Optimizer 7307D

Lim-Flex (25) Bull LFM 2103110  
 DP / HB 01.01.2016 LVLS 7307D

MYTTY IN FOCUS	S A F FOCUS OF E R
<b>LVLS FOCUS 5047Y</b>	MYTTY COUNTNESS 906
LVLS 5048 S	BON VIEW NEW DESIGN 1407
	BLACKCAP V935
	JCL BLACK OUT
LVLS 276N	LVLS JENI 601V
<b>LVLS 7307S</b>	LOUP VALLEY FOCUS 882
LVLS 7307	L V MISS IDEAL 9307

- Homozygous black and double polled
- Quarter Limousin and three quarters Angus, make this early January bull ideal in a hybrid scenario. He is ready to breed cows just as soon as he gets home and settled in.
- Studying the data on LVLS Optimizer 7307D you will soon see that he is on the desirable side of average for each calving ease, growth, maternal and convenience trait; as well as being in the top 10% for MB and SMTI.
- Going back 4 generation of Lonely Valley breeding, we can attest to the results you will get with 7307D.

	EPD	%Rank
CED	11	20
BW	0	20
WW	66	40
YW	98	40
MILK	33	10
CEM	6	50
SC	1.35	10
STAY	-	-
DOC	-	-
CW	25	55
REA	0.04	95
YG	-0.01	90
MARB	0.47	10
SMTI	65.33	10
Actual BW	87 lbs.	
Adj. WW	739 lbs.	
Adj. YW	1,229 lbs.	
ADG Post Weaning	3.06	
Adj. SC	35.9	

# 55 LVLS Optimizer 7851D

Lim-Flex (50) Bull LFM 2103115  
Scurred / DB 01.08.2016 LVLS 7851D

			EPD	%Rank
MYTTY IN FOCUS	S A F FOCUS OF E R	CED	10	25
<b>LVLS FOCUS 5047Y</b>	MYTTY COUNTESS 906	BW	0.2	25
LVLS 5048 S	BON VIEW NEW DESIGN 1407	WW	64	45
	BLACKCAP V935	YW	92	55
LVLS POLLED JUSTICE 0601E	LVLS POLLED BLACK JACK	MILK	29	20
<b>LVLS7851R</b>	LVLS JENI 601V	CEM	5	65
LVLS7851L	LVLS COWBOY 015F	SC	1.45	4
	LVLS 1855E	STAY	-	-
		DOC	16	65
		CW	24	60
		REA	0.1	>95
		YG	-0.04	85
		MARB	0.33	15
		SMTI	60.25	20
		Actual BW	86 lbs.	
		Adj. WW	669 lbs.	
		Adj. YW	1,188 lbs.	
		ADG Post Weaning	3.24	
		Adj. SC	37.6	

- Double black
- Here is a Mytty In Focus grandson who is double digits for CED and 29 for MK epd.
- In terms of carcass, he certainly will help the producer who needs some assistance in the IMF category, he has the MB epd to contribute significantly. He ranks in the top 15% of the breed for marbling.
- We also would like to point out his SC epd as a great indicator for onset of heifer puberty and fertility, he is more desirable than 96% of his peers in this convenience trait.

# 56 LVLS Optimizer 8796D

Lim-Flex (34) Bull LFM 2103125  
DP / DB 01.20.2016 LVLS 8796D

			EPD	%Rank
MYTTY IN FOCUS	S A F FOCUS OF E R	CED	14	4
<b>LVLS FOCUS 5047Y</b>	MYTTY COUNTESS 906	BW	-0.7	15
LVLS 5048 S	BON VIEW NEW DESIGN 1407	WW	62	55
	BLACKCAP V935	YW	85	70
LVLS 66G	COLE FIRST DOWN 46D	MILK	28	30
<b>LVLS8796M</b>	WZRK MISS VICTOR 707T	CEM	5	65
LVLS 794B	YKCC IRONSIDE BULL 155NS	SC	1.2	15
		STAY	-	-
		DOC	20	50
		CW	18	80
		REA	0.1	>95
		YG	-0.04	85
		MARB	0.42	10
		SMTI	62.54	15
		Actual BW	85 lbs.	
		Adj. WW	703 lbs.	
		Adj. YW	1,136 lbs.	
		ADG Post Weaning	2.71	
		Adj. SC	39.2	

- Double black and double polled
- Got heifers to breed? We have the bull for you. We could sit here and tell you about the history of the Mytty In Focus sons and their proven calving ease, but there is no sense in overstating the obvious! 8796D is a 14 CED! That places him in the top 4% of the non-parent population.
- On the opposite end of things, if marbling is a concern, he has that covered as well! .42 MB epd, ranks him amongst the top 10 of the breed.
- The dam of 8796D is another one of those long term residents around here! She is still going strong after 12 natural calves.

# 57 LVLS Optimizer 8850D

Lim-Flex (43) Bull LFM 2103124  
DP / DB 01.02.2016 LVLS 8850D

			EPD	%Rank
MYTTY IN FOCUS	S A F FOCUS OF E R	CED	10	25
<b>LVLS FOCUS 5047Y</b>	MYTTY COUNTESS 906	BW	0.9	40
LVLS 5048 S	BON VIEW NEW DESIGN 1407	WW	63	50
	BLACKCAP V935	YW	96	45
LVLS POLLED BLACK JACK	MAYS BLACK JET	MILK	24	65
<b>LVLS8850M</b>	LVLS REBECA	CEM	6	50
LVLS 1850E	MAYS BLACK JET	SC	1.24	15
	LJ MISS 850C	STAY	-	-
		DOC	17	60
		CW	29	40
		REA	0.2	90
		YG	0	90
		MARB	0.34	15
		SMTI	61.35	15
		Actual BW	84 lbs.	
		Adj. WW	630 lbs.	
		Adj. YW	1,154 lbs.	
		ADG Post Weaning	3.28	
		Adj. SC	36.3	

- Double black and double polled
- I suppose, we could have come up with a more inspiring and unique name for 8850D since he overcame all odds and posted a 650 WW without a mom! Unfortunately, we lost his dam at the age of 14 years of age after a super productive life.
- LVLS Optimizer 8850D is a son of our favorite purebred Angus, In Focus herd bull, LVLS Focus 5047Y.
- 43% Limousin with high marbling numbers and sought after calving ease data.



LVLS Top Criteria 8862P

# LVLS Top Criteria 8862P Sons

# 58 LVLS Stabilizer 9061D

% Limousin (75) Bull NXM 2104814  
HP / Black 01.08.2016 LVLS 9061D

			EPD	%Rank
COLE WULF HUNT	COLE FIRST DOWN 46D	CED	7	55
<b>LVLS TOP CRITERIA 8862P</b>	COLE CATALINA 3309C	BW	1.8	60
LVLS8862M	WZRK BIG KAHUNA 8046K	WW	81	4
	LVLS 3862G	YW	103	30
MAGS UNWASHED	WLR DIRECT HIT	MILK	18	>95
<b>LVLS BE YOURS 9061B</b>	H&H POLLED STARGAZER	CEM	1	>95
		SC	-	-
		STAY	-	-
		DOC	-	-
		CW	27	50
		REA	0.74	15
		YG	-0.39	10
		MARB	-0.29	85
		SMTI	44.86	65
		Actual BW	75 lbs.	
		Adj. WW	730 lbs.	
		Adj. YW	1,206 lbs.	
		ADG Post Weaning	2.98	
		Adj. SC	32.8	

- Homozygous polled and phenotypically black
- LVLS Top Criteria is 12 years old and we are still using him and his calves are still getting done, his calculated data may not be as extreme as some of these younger bulls, but the actual performance he transmits is certainly real and reliable.
- 9061D had an adj WW ratio of 111 in a large contemporary group.
- He posts a WW epd of 81 which puts him in the top 4% of the breed.

# 59 LVLS Maximizer 942D

PB Limousin (100) Bull NPM 2104833  
DP / Black 01.11.2016 LVLS 942D

			EPD	%Rank
COLE WULF HUNT	COLE FIRST DOWN 46D	CED	9	35
<b>LVLS TOP CRITERIA 8862P</b>	COLE CATALINA 3309C	BW	0.8	35
LVLS8862M	WZRK BIG KAHUNA 8046K	WW	73	15
	LVLS 3862G	YW	97	40
LVLS X-TERNAL 3506X	JCL LODESTAR 27L	MILK	24	65
<b>LVLS BERRY FLAVOR 942B</b>	LVLS 2506S	CEM	5	65
LVLS 942P	LVLS DURAMAX 2408M	SC	0.03	>95
	LVLS DEL MONICA 942D	STAY	10	95
		DOC	15	70
		CW	24	60
		REA	0.53	40
		YG	-0.23	40
		MARB	-0.23	75
		SMTI	43.55	70
		Actual BW	90 lbs.	
		Adj. WW	703 lbs.	
		Adj. YW	1,207 lbs.	
		ADG Post Weaning	3.15	
		Adj. SC	33.9	

- Double polled and black.
- LVLS Top Criteria, after 11 years of being used heavily nationwide still never fails to impress us, his sons such as 942D are always rising to the top. With over 500 recorded progeny, Top Criteria still remains below at a 95 ratio for BW, 109 for WW and 106 for YW. He truly is one of the finest we have ever bred.
- Raised on the side of a first calf heifer, we are in much anticipation for the future of LVLS Berry Flavor 942B.

# CHR Wild Bill 150W Sons

## 60 LVLS Stabilizer 1023D

Lim-Flex (58) Bull LFM 2103040  
DP / HB 01.18.2016 LVLS 1023D

		EPD	%Rank
GPFF BLAQUE RULON	BLACK DIAMOND	CED	9 35
<b>CHR WILD BILL 150W</b>	QUAIL RUN RAMONA BP	BW	2.4 70
MAGS SHUTTERBUG	BR MIDLAND	WW	71 20
	MAGS LADY ACE	YW	103 30
TC FREEDOM 104	CONNELLY FOREFRONT	MILK	23 75
<b>LVLS 4867U</b>	TC RUBY 9095	CEM	7 35
LVLS 2867H	WULF'S PAYDAY 1198C	SC	1 25
	LVLS MS STABILIZER 2867F	STAY	16 45
		DOC	6 95
		CW	31 35
		REA	0.41 60
		YG	-0.15 65
		MARB	0.12 30
		SMTI	55.34 30
		Actual BW	95 lbs.
		Adj. WW	701 lbs.
		Adj. YW	1,220 lbs.
		ADG Post Weaning	3.24
		Adj. SC	37.7

- Homozygous black and double polled
- This bull is just over a half Limousin, however he has that desirable skeletal extension and growth that the breed is known for.
- 1023D is one of the top calves in this year's calf with an adj ww of 701 lbs.
- In addition to being having 9 YW and 71 WW EPD, he also calculates 30 MB EPD, a great combination for use as a terminal sire!
- His dam is one of our most profitable females, she has weaned six calves with an avg WW ratio of 106. Those type are welcome here any day!

## 61 LVLS Optimizer 1017D

Lim-Flex (37) Bull LFM 2103028  
HP / DB 02.01.2016 LVLS 1017D

		EPD	%Rank
GPFF BLAQUE RULON	BLACK DIAMOND	CED	11 20
<b>CHR WILD BILL 150W</b>	QUAIL RUN RAMONA BP	BW	1.4 50
MAGS SHUTTERBUG	BR MIDLAND	WW	71 20
	MAGS LADY ACE	YW	107 20
MYTTY IN FOCUS	SA F FOCUS OF E R	MILK	22 80
<b>LVLS MISS FOCUS 2240W</b>	MYTTY COUNTESS 906	CEM	7 35
L V MISS BANDITO 2240	M G S A 5175 BANDITO 460	SC	1.27 15
	L V MISS HOSS 5201	STAY	17 35
		DOC	15 70
		CW	31 35
		REA	0.46 50
		YG	-0.09 75
		MARB	0.42 10
		SMTI	66.08 10
		Actual BW	94 lbs.
		Adj. WW	692 lbs.
		Adj. YW	1,259 lbs.
		ADG Post Weaning	3.54
		Adj. SC	37.4

- Homozygous polled and double black
- This bull is packed with solid performance posting a moderate birth of 1.4, 101 for yearling weight, .42 for marbling and 66 for MTI.
- His dam is a proven Angus female and daughter of Mytty In Focus back to a daughter of SAF 598 Bando 5175.
- 37% Lim-Flex herd sire prospect

## 62 LVLS Maximizer 1009D

% Limousin (78) Bull NXM 2103121  
DP / HB 01.07.2016 LVLS 1009D

		EPD	%Rank
GPFF BLAQUE RULON	BLACK DIAMOND	CED	9 35
<b>CHR WILD BILL 150W</b>	QUAIL RUN RAMONA BP	BW	2.3 70
MAGS SHUTTERBUG	BR MIDLAND	WW	78 10
	MAGS LADY ACE	YW	104 15
WULFS SIRLOIN 3172S	COLE WULF HUNT	MILK	25 55
<b>LVLS 796X</b>	WULFS NEGOTIABLE 3172N	CEM	8 20
LVLS 795U	JOL LODESTAR 27L	SC	0.75 55
	LVLS 795S	STAY	15 60
		DOC	11 85
		CW	35 20
		REA	0.62 25
		YG	-0.14 65
		MARB	0.09 30
		SMTI	56.11 30
		Actual BW	96 lbs.
		Adj. WW	739 lbs.
		Adj. YW	1,234 lbs.
		ADG Post Weaning	3.09
		Adj. SC	36.2

- Double polled and homozygous black
- A direct son of CHR Wild Bill 150W, making him a paternal brother to many sale highlights of the years.
- With a 78 WW EPD and a 104 YW EPD along with CW, REA and MB numbers that balance up nicely, the 1009D progeny should be highly marketable at various stages of the marketing chain.
- When we processed these calves in the heat of August, he was one of the heavier ones to come across the scale with a 111 adj WW ratio and a WDA of 3.57.
- We guarantee that you won't be disappointed when you see this 78% Limousin on sale day, or before!

# LFLC Zane 504Z Sons

## 63 LVLS Stabilizer 1012D

Lim-Flex (50) Bull LFM 2106219  
HP / DB 02.01.2016 LVLS 1012D

		EPD	%Rank
WULFS WALCOTT F711W	WULFS REAGAN 2011R	CED	11 20
<b>LFLC ZANE 504Z</b>	DMWC TRIXY 711T	BW	-0.2 20
LFLC STELLA 504S	CARROUSELS PURE POWER	WW	60 65
	LFLC DAKOTA BELLE 209K	YW	92 55
PA SAFEGUARD 021	G A R NEW DESIGN 5050	MILK	32 10
<b>LVLS BRIANNE 2200B</b>	PA LORNA MARSHALL 2905-73	CEM	3 90
LVLS 2200R	BON VIEW NEW DESIGN 1407	SC	0.78 55
	L V MISS EXT 2200	STAY	13 80
		DOC	20 50
		CW	22 70
		REA	0.52 40
		YG	-0.19 50
		MARB	0.4 10
		SMTI	62.84 15
		Actual BW	83 lbs.
		Adj. WW	695 lbs.
		Adj. YW	1,200 lbs.
		ADG Post Weaning	3.16
		Adj. SC	33.9

- This 50% Lim-Flex herd sire is homozygous polled and double black
- He posts a -.2 for birth, 89 for yearling weight, 32 for milk and .40 for marbling
- His MTI number is 62.84 and we feel his numbers will add value to his set of calves
- His dam ranks in the top 1% of the breed for MB and SMTI

## 64 LVLS Stabilizer 1034D

Lim-Flex (62) Bull LFM 2103109  
DP / HB 02.08.2016 LVLS 1034D

		EPD	%Rank
WULFS WALCOTT F711W	WULFS REAGAN 2011R	CED	11 20
<b>LFLC ZANE 504Z</b>	DMWC TRIXY 711T	BW	2.3 70
LFLC STELLA 504S	CARROUSELS PURE POWER	WW	76 10
	LFLC DAKOTA BELLE 209K	YW	103 30
LVLS FOCUS 5047Y	MYTTY IN FOCUS	MILK	32 10
<b>LVLS BEAUTY QUEEN 7307B</b>	LVLS 5048 S	CEM	5 65
LVLS 7307S	LVLS 276N	SC	0.88 45
	L V L S 7307	STAY	- -
		DOC	22 40
		CW	23 65
		REA	0.23 90
		YG	-0.12 70
		MARB	0.05 35
		SMTI	53.08 35
		Actual BW	94 lbs.
		Adj. WW	834 lbs.
		Adj. YW	1,329 lbs.
		ADG Post Weaning	3.09
		Adj. SC	36.2

- Homozygous Black and Double Polled
- For those of you who saw LFLC Zane when we purchased him in Luden's sale, you know that he quite simply is one of the thickest ended, biggest topped, ranch bulls that went through a sale ring in 2014. Thankfully, he has passed these same traits onto his offspring. These are meat bulls that are high CED ywo traits that don't always go hand in hand.
- Double digit CED and a 32 MK, this bull is ready to add these valuable convenience traits to your breeding scenario
- His dam goes back to Mytty In Focus, the long time calving ease sensation in the Angus population.

# LVLS Bourbon Sons

## 65 LVLS Optimizer 0702D

Lim-Flex (62.5) Bull LFM Pending  
DP / DB 01.02.2016 LVLS 0702D

MAGS ZENITH LVLS BOURBON 1069B	MAGS WINSTON MAGS XELA
MAGS UNHOOKS LVLS BE HAVE 702B MCBN TASHA 702T	BASIN FRANCHISE P142 MAGS MARQUEE AUTO DOLLAR GENERAL 122R AUTO MELANIA 271M

- Double polled and double black
- Sired by the son of MAGS Zenith, LVLS Bourbon is this big numbered beef bull
- He posts a -.05 for birth, 105 for yearling weight, 30 for milk and .30 for marbling
- If you need a bull that will positively change a calf crop and add that uniformity and top performance than consider this young bull to your program

	EPD	%Rank
CED	10	-
BW	-0.5	-
WW	68	-
YW	105	-
MILK	30	-
CEM	-	-
SC	0.85	-
STAY	-	-
DOC	12	-
CW	31	-
REA	0.4	-
YG	0.30	-
MARB	-	-
SMTI	62	-
Actual BW	75 lbs.	
Adj. WW	635 lbs.	
Adj. YW	1,105 lbs.	
ADG Post Weaning	2.82	
Adj. SC	35.5	



MAGS Zenith, sire of LVLS Bourbon 1069B

## 66 LVLS Optimizer 1000D

Lim-Flex (43) Bull LFM Pending  
DP / DB 01.01.2016 LVLS 1000D

MAGS ZENITH LVLS BOURBON 1069B	MAGS WINSTON MAGS XELA
B P F SPECIAL FOCUS 504 LVLS BETH 259B LVLS MISS 259Z	MYTTY IN FOCUS B P F BLACK CASH 341 LVLS SECRET WEAPON 4408K LVLS 259R

- Double polled and double black
- We admire the performance found in the 43% Lim-Flex bull. He has a breed leading BW EPD of -1.8, 101 for YW, 33 for MA and .46 for MARB
- The MAGS Zenith bull has been a solid producer in the Lonely Valley program and his son LVLS Bourbon

	EPD	%Rank
CED	16	-
BW	-1.8	-
WW	63	-
YW	101	-
MILK	33	-
CEM	-	-
SC	1.1	-
STAY	-	-
DOC	17	-
CW	27	-
REA	0.22	-
YG	-	-
MARB	0.46	-
SMTI	65	-
Actual BW	86 lbs.	
Adj. WW	721 lbs.	
Adj. YW	1,231 lbs.	
ADG Post Weaning	3.0	
Adj. SC	35.8	



## 67 LVLS Optimizer 919D

Lim-Flex (50) Bull LFM PENDING  
DP / DB 01.02.2016 LVLS 919D

MAGS ZENITH LVLS BOURBON 1069B	MAGS WINSTON MAGS XELA
LVLS TOP CRITERIA 8862P LVLS BLOSSOM 919B LVLS 919W	COLE WULF HUNT LVLS 8862M S A V 8180 TRAVELER 004 LVLS MISS 616 919P

- Double polled and double black
- Sired by the MAGS Zenith son LVLS Bourbon and from a daughter of the top performance sire LVLS Top Criteria
- The bull represents a predictable pedigree, stout numbers and a very complete conformation

	EPD	%Rank
CED	14	-
BW	-2.5	-
WW	59	-
YW	93	-
MILK	25	-
CEM	-	-
SC	0.6	-
STAY	-	-
DOC	17	-
CW	22	-
REA	0.42	-
YG	-	-
MARB	0.31	-
SMTI	61	-
Actual BW	73 lbs.	
Adj. WW	685 lbs.	
Adj. YW	1,252 lbs.	
ADG Post Weaning	3.33	
Adj. SC	36.0	

# Yearling Bulls



## 68 LVLS Dean 9489D

Lim-Flex (68) Bull LFM 2104834  
Polled / Black 01.03.2016 LVLS 9489D

			EPD	%Rank
WULFS XTRACTOR X233X	WULFS TITUS 2149T	CED	6	65
<b>WZRK ATLAS 8012A</b>	WULFS MYRENE 2332M	BW	1.9	60
WZRK MISS NASCAR 8012U	WULFS NASCAR G949N	WW	69	30
	WZRK MISS F LINER 1021L	YW	103	30
BOYD ON TARGET 1083	SAF 598 BANDO 5175	MILK	26	45
<b>LVLS 9489U</b>	BOYD FOREVER LADY 7095	CEM	8	20
LVLS9489N	LVLS POLLED BLACK JACK	SC	0.85	45
	LVLS 389X	STAY	11	90
		DOC	25	30
		CW	32	30
		REA	0.54	40
		YG	-0.21	45
		MARB	0.15	25
		SMTI	56.6	25
		Actual BW	90 lbs.	
		Adj. WW	635 lbs.	
		Adj. YW	1,171 lbs.	
		ADG Post Weaning	3.35	
		Adj. SC	37.0	

- This young herd sire prospect is a country mile long in terms of his skeletal format, and there is no doubt in our mind that extra ribs worth of length has helped add to his actual performance and WDA.

- WZRK Atlas is the homozygous polled, red bull with great numbers who was the talk of the 2014 sale season, selling from Wieczorek to Liberty Ranches. We used him to add some softness of structure and to give a shot of extra body capacity. We have been very pleased with what he has done for us thus far.

- 9489D is balanced in his growth, maternal and carcass traits, making him ideal for both commercial and registered herds alike. He would work incredible on a set of Baldie cows.

## 69 LVLS Stabilizer 7306D

Lim-Flex (68) Bull LFM 2103108  
DP / HB 01.05.2016 LVLS 7306D

			EPD	%Rank
CJSL WINDFALL 9072W	LVLS SECRET WEAPON 4408K	CED	6	65
<b>EF ZEN 344Z</b>	CJ'S MS ARROWHEAD 456P	BW	3.4	90
EF TREND SETTER 206T	GPFF BLAQUE RULON	WW	71	20
	TUBB BLK DAKOTA 304N	YW	101	35
LAGRAND ARCHITECT 7118	KCF BENNETT ARCHITECTM299	MILK	31	15
<b>LVLS 7306W</b>	LAGRAND PRIMROSE 5835	CEM	3	90
LVLS7306L	LVLS POLLED BLACK JACK	SC	0.2	95
	LVLS 306W	STAY	-	-
		DOC	-	-
		CW	30	40
		REA	0.41	60
		YG	-0.1	75
		MARB	-0.04	45
		SMTI	49.27	50
		Actual BW	97 lbs.	
		Adj. WW	679 lbs.	
		Adj. YW	1,226 lbs.	
		ADG Post Weaning	3.42	
		Adj. SC	36.1	

- Homozygous Black and Double Polled

- LVLS Stabilizer 7306D is a son of the 2014 National Champion bull, EF Zen who is homozygous polled and known for his add stoutness and look. 7306D possesses the same straight lines and level hip as his sire.

- 71 WW epd and 98 YW epd makes him attractive to utilize to add lbs into a program.

- 7306D traces back to KCF Architect M299 who is popular for his low birthweight and high marbling data.

- In terms of weaning weight, he calculated an adj WW of 679lbs.

## 70 LVLS Daniel Boone 0004D

PB Limousin (100) Bull NPM 2103678  
Polled / DB 01.10.2016 LVLS 0004D

			EPD	%Rank
DHVO DEUCE 132R	GPFF BLAQUE RULON	CED	4	90
<b>MAGS XTRA WET</b>	AMY JO DHAN 20L	BW	3.1	85
MAGS PUDDLES	JCL LODESTAR 27L	WW	76	10
	CANE RIDGE POLL ANGEL 318	YW	93	50
MAGS UNWASHED	WLR DIRECT HIT	MILK	26	45
<b>LVLS 4Z</b>	H&H POLLED STARGAZER	CEM	4	80
LVLS 04W	AUTO BLACK DAKOTA 129J	SC	0.45	85
	LVLS 4P	STAY	14	70
		DOC	22	40
		CW	28	45
		REA	0.26	85
		YG	-0.10	70
		MARB	-0.19	65
		SMTI	45.73	60
		Actual BW	85 lbs.	
		Adj. WW	643 lbs.	
		Adj. YW	1,161 lbs.	
		ADG Post Weaning	3.24	
		Adj. SC	37.4	

- Polled and double black

- Our good friends at Liberty Ranch have had tremendous luck with their MAGS Xtra Wet progeny, consequently we have sampled him the past few years. He has had similar results, progeny that are predictable and show a great deal of growth from birth to weaning.

- 0004D is out a nice young, MAGS Unwashed daughter who we really appreciate what she is doing and the future she has ahead of her.

- Here is a super sound structured Lodestar grandson who should work on either Registered or commercial cows.

## 71 LVLS Optimizer 6791D

%Limousin (21) Bull NXM 2103104  
HP / HB 01.03.2016 LVLS 6791D

			EPD	%Rank
SITZ UPWARD 307R	CONNELY ONWARD	CED	14	4
<b>EXAR UPSHOT 0562B</b>	SITZ HENRIETTA PRIDE 81M	BW	-0.6	15
EXAR BARBARA T020	ISU IMAGING Q 911I	WW	62	55
	LCC MC HENRY BARBAR MG382	YW	103	30
MYTTY IN FOCUS	S A F FOCUS OF E R	MILK	29	20
<b>LVLS 6792Y</b>	MYTTY COUNTESS 906	CEM	5	65
LVLS 6792W	CARROUSELS PURE POWER	SC	1.3	10
	LVLS6792K	STAY	-	-
		DOC	19	55
		CW	32	30
		REA	0.81	10
		YG	-0.09	75
		MARB	0.73	1
		SMTI	75.17	2
		Actual BW	87 lbs.	
		Adj. WW	625 lbs.	
		Adj. YW	1,139 lbs.	
		ADG Post Weaning	3.21	
		Adj. SC	37.0	

- Homozygous black and homozygous polled

- This high percentage Angus Lim-Flex is sired by one of the most popular sires in the Angus population right now. EXAR Upshot seems to be the bull that is doing it all, added lbs, additional marbling and exceptional eye appeal. We love our Upshot progeny, our first calf crop by him hit the ground in 2013 and we have felt a need to keep using him from time to time due to the quality he injects.

- LVLS Optimizer 6791D doesn't have a hole in his data set ranging from CED all the way across to marbling, he literally hits all the high notes and will offer any breeder a set of utilizable tools.

- 6791D is a Mytty In Focus grandson on his dam's side and goes back to Carrouseles Pure Power as well.



# 72 LVLS 2063D ET

Lim-Flex (50) Bull LFM 2108918  
HP / HB 01.01.2016 LVLS 2063D

		EPD	%Rank
MRL X-RATED 014X	CTCA BUCKEYE BULL 8261U	CED	8 -
	HUNT CORNHUSKER 225N	BW	1.9 -
	LESF 5201R	WW	75 -
	MRL TASTE OF COUNTRY 790T	YW	112 -
	BADGER HILL FELIX	MILK	32 -
	MRL JACUZZI	CEM	7 -
LVLS 798R	BON VIEW NEW DESIGN 1407	SC	0.9 -
	B/R NEW DESIGN 036	STAY	-
	BON VIEW PRIDE 664	DOC	14 -
	B T FREEWAY 91F	CW	37 -
	BLACKCAP V632	REA	0.53 -
	BLACKCAP V632	YG	-0.12 -
		MARB	0.17 -
		SMTI	60.32 -
		Actual BW	92 lbs.
		Adj. WW	657 lbs.
		Adj. YW	1,272 lbs.
		ADG Post Weaning	3.84
		Adj. SC	36.9

- Homozygous polled and homozygous black
- MRL X-Rated 014X is a bull that was used heavily in the Coleman program and we sampled on several cows here at Lonely Valley based on their success. We are very pleased with what he did when we flushed him to one of our top Angus donors, LVLS 798R. He is a high growth and high maternal sire that mated nicely with a superior carcass trait Angus dams.
- 2063D is a maternal brother to LVLS Yukon 798Y who our good friends at Milam Cattle Co. bought in out 2012 sale and has been used heavily via A.I.

# 73 LVLS Discovery 8108D

Lim-Flex (37) Bull LFM 2103709  
HP / HB 01.03.2016 LVLS 8108D

		EPD	%Rank
AHCC ANCHOR 838A	AHCC WESTWIND W544	CED	13 10
	KAJO RESPONDER 120R	BW	-1.3 10
	AHCC MISS WULF HUNT R544	WW	87 1
	AHCC MISS PRECISION U838	YW	133 1
	HC DYNASTY 638	MILK	24 65
	S A F FOCUS OF E R	CEM	8 20
LVLS MISS IN FOCUS 8108X	MYTTY IN FOCUS	SC	1.23 15
	LVLS MISS OBJECTIVE 8107U	STAY	14 70
	S S OBJECTIVE T510 OT26	DOC	17 60
	FRENZEN MATILDA M78	CW	43 10
		REA	0.29 80
		YG	0.12 >95
		MARB	0.41 10
		SMTI	68.44 5
		Actual BW	75 lbs.
		Adj. WW	761 lbs.
		Adj. YW	1,251 lbs.
		ADG Post Weaning	3.06
		Adj. SC	38.0

- Homozygous polled and homozygous black
- BOOM! If you are looking for a monster numbered individual who is out of a trait leading calving ease dam and by a YW trait leader, look no further.
- 8108D has one of the absolute supremely compiled data sets in the entire offering and is one of the most statistically unique individuals ever created at Lonely Valley Ranch.
- A direct son of the 2014 high selling bull out of the Hager Cattle Co Sale, AHCC Anchor is giving us a solid foundation to work off of. He was recorded an 870lb adj WW and never looked back from the time he hit the ground. Now, his sons are breeding pieces are anticipated to have the same influential impact that he has in such a short amount of time.
- The ranking spread within his contemporary group to this point is nothing short of amazing. He calculated an adj. BW ratio of 88 and Adj. WW ratio of 115!

# 74 LVLS Optimizer 03D

Lim-Flex (50) Bull LFM PENDING  
HP / HB 02.09.2016 LVLS 03D

		EPD	%Rank
AHCC BACK AGAIN B901	AHCC WESTWIND W544	CED	3 -
	KAJO RESPONDER 120R	BW	2.5 -
	AHCC MISS WULF HUNT R544	WW	44 -
	LVLS FARMER JOHN 7428P	YW	95 -
	LVLS9066R	MILK	26 -
FOUNDATION ANGUS COW		CEM	-
		SC	0.9 -
		STAY	-
		DOC	15 -
		CW	20 -
		REA	0.15 -
		YG	-
		MARB	0.0 -
		SMTI	55 -
		Actual BW	90 lbs.
		Adj. WW	645 lbs.
		Adj. YW	1,154 lbs.
		ADG Post Weaning	3.02
		Adj. SC	36.4

- Homozygous polled and homozygous black
- This 50% Lim-Flex herd sire prospect is sired by the AHCC West Wind son AHCC Back Again B901 and from the daughter of LVLS Farmer John 7428P
- We admire the look, profile and top performance found within this top prospect

## Angus Bulls

# 75 LVLS Dabo 39D

Angus Bull AAA +18627214  
Polled / Black 01.11.2016 39D

		EPD	%Rank
S A V RESOURCE 1441	RITO 707 OF IDEAL 3407 7075	CED	1 -
	R R RITO 707	BW	2.4 -
	IDEAL 3407 OF 1418 076	WW	57 -
	S A V BLACKCAP MAY 4136	YW	101 -
	S A V TRAVELER 004	MILK	29 -
	S A V MAY 2397	CEM	-1 -
LVLS 798R	BON VIEW NEW DESIGN 1407	SC	-
	B/R NEW DESIGN 036	DOC	-
	BON VIEW PRIDE 664	CW	-
	B T FREEWAY 91F	REA	-
	BLACKCAP V632	YG	-
		MARB	-
		SW	50.35 -
		SF	60.79 -
		Actual BW	89 lbs.
		Adj. WW	658 lbs.
		Adj. YW	1,246 lbs.
		ADG Post Weaning	3.45
		Adj. SC	37.3

- Genex sire, SAV Resource has caught the attention of progressive cattlemen worldwide for his ability to inject a functional skeleton into cattle that may need an extra dose of soundness or moderation of frame. We are very excited about our Resource calves!
- 39D is in the top 15% of the Angus breed for WW, YW and Milk epd and \$F value.
- He certainly is easy to look at with his straight lines, sound structure and attractive profile. This calf has a lot of "go" left in him, he is still youthful in his appearance and gives you a look that indicates longevity.





# 76 LVLS Devils Cut 2967D

Angus Bull AAA 18605268  
Polled / Black 01.04.2016 LVLS 2967D

S A V BISMARCK 5682 G A R GRID MAKER  
S A V ABIGALE 0451  
S A V MISS BOBBIE 7463 S A V 004 PREDOMINANT 4438  
S A V MISS BOBBIE 4177  
H A IMAGE MAKER 0415 HERO 6267 OF R R 2418  
LVLS YOUR MAKER 2966Y H A RITO BLACKCAP 9038  
LVLS NEW DESIGN 2966P BON VIEW NEW DESIGN 208  
VISION MISS POWERMARK 486

	EPD	%Rank
CED	6	-
BW	1.9	-
WW	69	-
YW	103	-
MILK	26	-
CEM	8	-
SC	0.85	-
DOC	11	-
CW	25	-
REA	32	-
YG	0.54	-
MARB	-0.21	-
SW	0.15	-
SF	56.6	-
Actual BW	81 lbs.	
Adj. WW	723 lbs.	
Adj. YW	1,254 lbs.	
ADG Post Weaning	3.22	
Adj. SC	37.39	

- For those who aren't familiar with your distillery terminology, the Devils Cut is the portion of wine or liquor that is absorbed into the wood of the aging barrel, but the progressive distilleries have found a way to recoup it and sell it for a premium. We feel that this Bruiser calves will help you recover some pounds that may have been lost in your search for additional calving ease or maternal traits.
- Devils Cut is sired by SAV Bruiser 9164 who was the #1 sire for Total Profit and Feed Efficiency indexes through the Angus Sire Alliance commercial testing program.
- In the Angus database, LVLS Devils Cut ranks in the top 15% for WW and top 20% for YW and CED.



# 77 LVLS Detroit 9098D

Angus Bull AAA 18550229  
Polled / Black 01.01.2016 LVLS 9098D

S A V BISMARCK 5682 G A R GRID MAKER  
S A V BRILLIANCE 8077 S A V ABIGALE 0451  
S A V BLACKCAP MAY 5270 S A V 8180 TRAVELER 004  
S A V MAY 2420  
CONNEALY FINAL PRODUCT CONNEALY PRODUCT 568  
LVLS AMMIE 9098A EBONISTA OF CONANGA 471  
LVLS CAMMIE 9098Y MYTTY IN FOCUS  
KG CAMMIE 326

	EPD	%Rank
CED	8	-
BW	0.1	-
WW	51	-
YW	89	-
MILK	25	-
CEM	10	-
SC	0.27	-
DOC	-	-
CW	-	-
REA	-	-
YG	-	-
MARB	-	-
SW	+48.20	-
SF	+43.01	-
Actual BW	75 lbs.	
Adj. WW	695 lbs.	
Adj. YW	1,231 lbs.	
ADG Post Weaning	3.24	
Adj. SC	34.79	

- SAV Brilliance 8077 is the highly syndicated ABS sire that was bred in the Schaff program and has been used in records numbers in both the commercial heifer market and purebred Angus/hybrid segments. The sons of him have been in high demand for obvious reasons.
- LVLS Detroit 9098D has plenty of power, yet has that refined has the underpinning to allow him to cover lots of ground.
- Lots of calving ease in this calf's lineage, will work well on heifers and cows alike.

# 78 LVLS Dark Horse 775D

Angus Bull AAA 18576286  
Polled / Black 01.15.2016 LVLS 775D

RITO 707 OF IDEAL 3407 7075 R R RITO 707  
S A V RESOURCE 1441 IDEAL 3407 OF 1418 076  
S A V BLACKCAP MAY 4136 S A V 8180 TRAVELER 004  
S A V MAY 2397  
H A IMAGE MAKER 0415 HERO 6267 OF R R 2418  
LVLS YOUR IMAGE 775Y H A RITO BLACKCAP 9038  
LVLS MISS BANDO 775W S A V 5175 BANDO 0699  
LVLS NEW DESIGN 775P

- Here is a standout son of SAV Resource 1441, the Genex sire that is being used by cattleman from coast to coast for his ability to balance phenotype and data.
- These Image Maker influenced cattle have been an integral part of our Angus program due to their balanced trait profile and the additional muscle that they have.
- Study the numbers on this calf, he is the top 3% of the Angus non-sires for WW and YW!

	EPD	%Rank
CED	2	-
BW	2.4	-
WW	65	-
YW	114	-
MILK	25	-
CEM	0.0	-
SC	0.78	-
DOC	-	-
CW	-	-
REA	-	-
YG	-	-
MARB	-	-
SW	+52.98	-
SF	+79.54	-
Actual BW	84 lbs.	
Adj. WW	731 lbs.	
Adj. YW	1,296 lbs.	
ADG Post Weaning	3.32	
Adj. SC	37.74	

# 79 LVLS Dr John 8211D

Angus Bull AAA 18595648  
Polled / Black 01.16.2016 LVLS 8211D

S A V BISMARCK 5682 G A R GRID MAKER  
S A V BRILLIANCE 8077 S A V ABIGALE 0451  
S A V BLACKCAP MAY 5270 S A V 8180 TRAVELER 004  
S A V MAY 2420  
S A V 8180 TRAVELER 004 SITZ TRAVELER 8180  
LVLS MISS TRAVELER BOYD FOREVER LADY 8003  
SILVER OAK 61 061 RITO 616 OF 4B20 6807  
S O BLUEBIRD 0400

	EPD	%Rank
CED	7	-
BW	1.1	-
WW	47	-
YW	82	-
MILK	24	-
CEM	9	-
SC	-	-
DOC	-	-
CW	-	-
REA	-	-
YG	-	-
MARB	-	-
SW	+50.0	-
SF	+32.0	-
Actual BW	90 lbs.	
Adj. WW	662 lbs.	
Adj. YW	1,139 lbs.	
ADG Post Weaning	2.91	
Adj. SC	37.74	

- SAV Brilliance has 5900 registered progeny for a reason; very rarely does an Angus bull bring calving ease, muscle and power to us, in one complete package like Brilliance does. The only thing that we would change about our Brilliance calves is there isn't enough of them! If you don't have a shot of Brilliance in your Lim-Flex or Angus program, we would highly recommend it. It is the easiest and quickest way to add lbs and substance back into your cowherd.
- On the maternal side of his pedigree he goes back to 616, who before Mytty In Focus, was the go to sire for calving ease and low birthweight.

# 80 LVLS Focus 1043D

Angus Bull AAA 18559819  
Polled / Black 01.06.2016 LVLS 1043D

MYTTY IN FOCUS  
**LVLS FOCUS 5047Y**  
LVLS 5048 S

BON VIEW NEW DESIGN 1407  
**LVLS MISS NEW DESIGN 9133U**  
LV MISS PROMPTER 9133

S A F FOCUS OF E R  
MYTTY COUNTESS 906  
BON VIEW NEW DESIGN 1407  
BLACKCAP V935  
B/R NEW DESIGN 036  
BON VIEW PRIDE 664  
RALLY PROMPTER 1071  
LV MISS HOSS 4215

- This Mytty In Focus grandson is designed on paper and phenotypically like a calving ease deluxe sire.
- In the Angus database he records a 1.3 BW EPD which converts to -1.00 in the Limousin population.
- Flat shouldered, long fronted and clean jointed appeals to us as calving ease sire.

	EPD	%Rank
CED	6	-
BW	1.3	-
WW	40	-
YW	67	-
MILK	27	-
CEM	9	-
SC	-	-
DOC	-	-
CW	-	-
REA	-	-
YG	-	-
MARB	-	-
SW	+40.71	-
SF	+11.81	-
Actual BW	86 lbs.	
Adj. WW	688 lbs.	
Adj. YW	1,112 lbs.	
ADG Post Weaning	2.61	
Adj. SC	36.42	



LVLS Focus 5047Y, sire of Lot 80.

# 81 LVLS Denmark 7933D

Angus Bull AAA 18550223  
Polled / Black 01.17.2016 LVLS 7933D

CONNEALY PRODUCT 568  
**CONNEALY FINAL PRODUCT**  
EBONISTA OF CONANGA 471

BON VIEW NEW DESIGN 1407  
**LVLS MISS NEW DESIGN 7933U**  
BLACKCAP V935

G A R RETAIL PRODUCT  
PRIDE FINE OF CONANGA 566  
CONNEALY DEEP CANYON 454  
EBONISA OF CONANGA 5469  
B/R NEW DESIGN 036  
BON VIEW PRIDE 664  
B T FREEWAY 91F  
BLACKCAP V632

- Though deemed the "cow maker" by ABS Global, we would put our Connealy Final Product bulls up against any sire group we have in terms of performance.
- 7933D is moderate framed, yet still weighs down the scales. His skeletal dimension is certainly admirable.
- A grandson of Bon View New Design 1407, who worked so well in the Angus populations as hell as hybrid scenarios.

	EPD	%Rank
CED	3	-
BW	1.3	-
WW	47	-
YW	85	-
MILK	29	-
CEM	7	-
SC	0.53	-
DOC	-	-
CW	-	-
REA	-	-
YG	-	-
MARB	+45.47	-
SW	+38.59	-
SF	-	-
Actual BW	84 lbs.	
Adj. WW	665 lbs.	
Adj. YW	1,238 lbs.	
ADG Post Weaning	3.42	
Adj. SC	37.78	

## Heifers

# 82 LVLS Daphne 4866D

Lim-Flex (71) Cow LFF 2103550  
DP / DB 01.01.2016 LVLS 4866D

AUTO DOLLAR GENERAL 122R  
**LVLS X-TRA PROFIT 2014**  
JCL MAYBERRY 62S

BASIN MAX 602C  
**LVLS4867T**  
LVLS 2867H

LVLS SECRET WEAPON 4408K  
AUTO KYRIA 232K  
CARROUSELS PURE POWER  
JCL MAYBERRY  
G T MAXIMUM  
BASIN ELINE ERICA 315U  
WULF'S PAYDAY 1198C  
LVLS MS STABILIZER 2867F

- Double polled and double black
- This 71% Limousin female is sired by LVLS X-Tra Profit 2014, a proven son of AUTO Dollar General 122R from the once elite donor JCL Mayberry 62S
- We appreciate the moderation of frame, fleshing ability and maternal look of this young heifer

	EPD	%Rank
CED	6	65
BW	2.6	75
WW	62	55
YW	98	40
MILK	22	80
CEM	3	90
SC	0.55	75
STAY	15	60
DOC	11	85
CW	32	30
REA	0.2	90
YG	-0.04	85
MARB	-0.01	45
SMTI	48.1	55
Actual BW	87 lbs.	
Adj. WW	511 lbs.	





# 83 LVLS Deanna 4869D

Lim-Flex (61) Cow LFF 2103552  
PP / DB 01.01.2016 LVLS 4869D

MAGS WINSTON BT CROSSOVER 758N  
MAGS ZODIAC MAGS STRAWBERRY  
MAGS XANTHOUS DHVO DEUCE 132R  
BOHI RHONDA 314R  
CHR WHITE ROSE 162W GPF BLAQUE RULON  
LVLS BRYSSA 4869B CHR MOLLY ROSE 001M  
LVLS 4867Y POSS TARGET 6110  
LVLS 4867U

	EPD	%Rank
CED	10	25
BW	1.6	55
WW	77	10
YW	133	1
MILK	22	80
CEM	8	20
SC	0.62	65
STAY	-	-
DOC	14	75
CW	52	2
REA	0.27	85
YG	-0.03	90
MARB	0.08	35
SMTI	55.8	30
Actual BW	77 lbs.	
Adj. WW	574 lbs.	

- Double polled and double black
- This young replacement heifer ranks in the top 1% of the breed for yearling weight and top 2% of the breed for carcass weight
- We admire this heifer up through her head and neck and her extreme femininity
- She is structurally sound, long and level down her topline and very appealing from her side profile



# 84 LVLS Divinity 9731D

Lim-Flex (56) Cow LFF 2104890  
DP / DB 01.01.2016 LVLS 9731D

MAGS WHITCOMB BT CROSSOVER 758N  
MAGS ZARAH EXLR 199H  
AUTO CARMINDA 656S JCL LODESTAR 27L  
AUTO CARMINDA 872P  
BASIN MAX 602C G T MAXIMUM  
LVLS 9731W BASIN ELINE ERICA 315U  
LVLS9731N LVLS DOUBLEDOWN 3615K  
LVLS MS STABILIZER 2731F

	EPD	%Rank
CED	9	35
BW	1.3	45
WW	51	95
YW	90	60
MILK	27	35
CEM	6	50
SC	0.57	75
STAY	17	35
DOC	13	80
CW	26	55
REA	0.28	85
YG	-0.01	90
MARB	0.18	25
SMTI	51.45	40
Actual BW	86 lbs.	
Adj. WW	555 lbs.	

- Double polled and double black
- This young replacement heifer has the prominent look and desirable profile to her
- She is sound from the ground up and represents a strong and predictable pedigree
- Her sire MAGS Zarah is the once \$26,000 valued sire and this is now the leading sire for Liberty Ranch at our southern location



# 85 LVLS Doreen 2049D

Lim-Flex (25) Cow LFF 2105762  
HP / DB 01.16.2016 LVLS 2049D

S A V NORTH DAKOTA 7451 S A V MANDAN 5664  
ADLL AXL 3007A S A V PRIMROSE 4410  
EF YADDA YADDA 809Y DHVO DEUCE 132R  
MAGS RUFFLES  
BON VIEW NEW DESIGN 878 B/R NEW DESIGN 036  
LVLS MISS DESIGN 2048X BON VIEW GAMMER 85  
LVLS ND 208 2048R BON VIEW DESIGN 208  
VISION MISS POWERMARK 486

	EPD	%Rank
CED	11	20
BW	1.5	50
WW	58	70
YW	93	50
MILK	27	35
CEM	7	35
SC	1.2	15
STAY	14	70
DOC	14	75
CW	26	55
REA	0.43	60
YG	-0.07	80
MARB	0.36	10
SMTI	61.48	15
Actual BW	91 lbs.	
Adj. WW	533 lbs.	

- Double black and homozygous polled
- This 25% Lim-Flex heifer is an amazing cow prospect from the heart of the LVLS program
- She is a daughter of ADKLL Axl 3007A, a leading son of SAV North Dakota 7451 that is owned in partnership with Linhart Limousin
- Her dam is a daughter of Bon View New Design 878
- This brood cow prospect is sound made, easy in her fleshing ability and yet very feminine and maternal in her look

# 86 LVLS Dahila 9075D

Lim-Flex (50) Cow  
DP / DB

LFF 2104821  
01.22.2016

LVLS 9075D

MAGS WAZOWSKI  
LVLS BANK ACCOUNT 8116B  
LVLS WILMA 8116W  
LVLS SECRET WEAPON 4408K  
LVLS UNKNOWN 9075U

DHVO DEUCE 132R  
BOHI RED ROBIN 282R  
LVLS TOP CRITERIA 8862P  
LVLS 8115T  
LVLS FARMER 4G  
LVLS 408H

- Double polled and double black
- This fancy made heifer ranks in the top 3% of the breed for TM with a 70, top 4% for CW with a 40 and top 10% for WW with a 76, YW with a 119 and MK with a 32
- She is a daughter of LVLS Bank Account, the once top selling bull at Lonely Valley going to Liberty Ranch. He is a son of the now deceased MAGS Wazowski that was a part of the Fuchs herd in Texas

	EPD	%Rank
CED	6	65
BW	2.8	80
WW	76	10
YW	119	10
MILK	32	10
CEM	4	80
SC	1	25
STAY	11	90
DOC	-	-
CW	45	4
REA	0.48	50
YG	-0.12	70
MARB	0.09	30
SMTI	57.29	25
Actual BW	--	
Adj. WW	610 lbs.	



# 87 LVLS Dark Secret 722D

Lim-Flex (56) Cow  
HP / DB

LFF 2103699  
02.09.2016

LVLS 722D

EXAR UPSHOT 0562B  
LSTO BEST EFFORT 4833B  
SBLX XTRA SPECIAL  
MAGS TWAIN  
HAHK WATERBUG 722W  
SBLX TUESDAY 511T

SITZ UPWARD 307R  
EXAR BARBARA T020  
DHVO DEUCE 132R  
MAGS MANUELA  
AUTO DOLLAR GENERAL 122R  
THOMAS PATRICIA 1911  
EXLR EXCELLANTE 251L  
PBR CREEK STYLE 511R

- Double black and homozygous polled
- Sired by LSTO Best Effort 4833B, the leading LVLS purchase from Stowers Limousin Land & Cattle Co. He is a son of EXAR Upshot 0562B and from the \$50,000 half interest valued female that headlines the Stowers program
- This young heifer is from a daughter of the big numbered bull MAGS Twain back to a Sugar Bush female on the bottom side
- She ranks in the top 15% of the breed for YW with a 112 and CW with a 38

	EPD	%Rank
CED	10	25
BW	2	65
WW	61	60
YW	112	15
MILK	29	20
CEM	3	90
SC	1.03	25
STAY	-	-
DOC	18	55
CW	38	15
REA	0.48	50
YG	-0.04	85
MARB	0.24	20
SMTI	58.12	25
Actual BW	90 lbs.	
Adj. WW	516 lbs.	



# 88 LVLS Dune Buggy 9164D ET

Lim-Flex (50) Cow  
HP / DB

LFF 2108917  
01.18.2016

LVLS 9164D

AUTO DOLLAR GENERAL 122R  
BOHI TOP DOLLAR 7144T  
CARROUSELS PINA COLADA  
FRENZEN KEYSTONE K17  
FRENZEN BLACKBIRD M120  
FRENZEN BLACKBIRD H115

LVLS SECRET WEAPON 4408K  
AUTO KYRIA 232K  
AUTO BLACK DAKOTA 129J  
ELMW GINNIE P58G  
SITZ ALLIANCE 6595  
WK BANDO 6314  
F&F BLACKBIRD Y38

- Double black and homozygous polled
- This 50% Lim-Flex heifer is sired by the purebred bull BOHI Top Dollar 7144T, a son of AUTO Dollar General 122R from the once national champion female Carrouseles Pina Colada
- This heifer is moderate in her frame score, docile and has the desirable look and profile

	EPD	%Rank
CED	5	80
BW	2.6	75
WW	63	50
YW	99	35
MILK	33	10
CEM	8	20
SC	0.95	35
STAY	12	85
DOC	-	-
CW	32	30
REA	0.1	>95
YG	0.06	>95
MARB	0.27	20
SMTI	59.08	20
Actual BW	86 lbs.	
Adj. WW	515 lbs.	



# LIMOUSIN TODAY PROFIT TOMORROW



## What is a Lim-Flex®?

Limousin are the ideal complement to British-based cattle. With Lim-Flex® hybrids, there are genetic options to fit every need, from fullblood and purebred Limousin for a “full-shot” of muscle and efficiency, to Lim-Flex hybrids for a “blended-shot” of Limousin with added marbling and maternal from Angus (black or red). With Lim-Flex, breeders can offer a just-right shot of Limousin to meet the needs of any crossbreeding program.

Lim-Flex stands for Limousin with muscle and efficiency, along with flexibility — the most significant strength of this powerful genetic blend:

- Flexible seedstock for simple, easily managed crossbreeding;
- Flexible market progeny that consistently hit dressing percent, yield and quality grade targets;

- Flexible females adapted for efficiency across a wide range of environments.

FLEX stands for Limousin Efficiency Cross — the beef industry’s answer to profitable system-wide production of case ready products. NALF’s UltraMate Xbreeding System outlines how to use Limousin and Lim-Flex seedstock on different types of commercial cows to hit end-product and maternal targets.

Registered Lim-Flex are backed by documented pedigrees, EPDs, and genomic data provided by the North American Limousin Foundation.

**LIM-FLEX**   
Limousin x Angus Hybrid

**Limousin and Lim-Flex® (Limousin x Angus hybrid) deliver to your bottom line.**

- |                                  |                            |
|----------------------------------|----------------------------|
| ‡ Calving ease & calf vigor      | ‡ Tested & proven docility |
| ‡ More pounds to sell at weaning | ‡ Cow & bull longevity     |
| ‡ Feed efficiency                | ‡ Carcass merit            |

To find out more about how you can profit tomorrow with Limousin or Lim-Flex® bulls and females, contact Frank Padilla, NALF director of marketing, at 308-350-3323 or visit [www.NALF.org](http://www.NALF.org).

North American Limousin Foundation • 303-220-1693 • [Limousin@NALF.org](mailto:Limousin@NALF.org)

# LIMOUSIN TODAY PROFIT TOMORROW



"Limousin and Lim-Flex bulls have added pounds to my calves at sale time. They have topped the market year after year and sell to the same buyer. They work for him."

*-Galen Peterson, Kansas rancher  
and cow-calf producer*



---

**Limousin and Lim-Flex® (Limousin x Angus hybrid) deliver to your bottom line.**

- ‡ Calving ease & calf vigor
- ‡ More pounds to sell at weaning
- ‡ Feed efficiency
- ‡ Tested & proven docility
- ‡ Cow & bull longevity
- ‡ Carcass merit

To find out more about how you can profit tomorrow with Limousin or Lim-Flex® bulls and females, contact Frank Padilla, NALF director of marketing, at 308-350-3323 or visit [www.NALF.org](http://www.NALF.org).

**North American Limousin Foundation • 303-220-1693 • [Limousin@NALF.org](mailto:Limousin@NALF.org)**

**R&R**  
MARKETING  
1212 Laurel St., #1614,  
Nashville, TN 37203

FIRST CLASS  
PRE-SORTED  
PAID  
Montezuma, Iowa  
Permit No. 30

Catalog  
designed  
by  
  
designs by  
*am*  
[www.designsbyarin.com](http://www.designsbyarin.com)



26TH ANNUAL LONELY VALLEY  
**KEEPIN' KIND**  
BULL SALE

Limousin • Lim-Flex • Angus

Saturday, February 25, 2017  
1:00 P.M. at the farm, Creston, Nebraska

